

# LAPHOUND NEWS

**VICTORIA LAPIDARY & MINERAL SOCIETY**

P.O. Box 5114, Station B  
Victoria, B.C. V8R 6N3



Vol. 55 – 3

Website:- [www.vlms.ca](http://www.vlms.ca)

April 2012.

<b>President</b>	Patrick Lydon	<b>Show Chairman</b>	Gerri Speedie
<b>V. President</b>	Mike Hill	<b>Librarian</b>	Leni Gagnon
<b>Past President</b>	Cameron Speedie	<b>Sunshine Corner</b>	Lorena Taylor
<b>Secretary</b>	Carrie Maier		Phone; 250-384-0755
<b>Treasurer</b>	Greg Shea	<b>Field Trips</b>	Gilles Lebrun
<b>Members</b>	Barbara Smith		Phone: 250-382-6119
<b>At Large</b>	David Hoskins	<b>Workshop</b>	Brian McMillan
	Brian McMillan	<b>Programs</b>	Vacant
	Brad Woollven	<b>Membership</b>	Kathleen Kane
<b>Editor</b>	Leni Gagnon, 472 Meredith Crescent, Victoria, B.C. Phone: 250-479-6214		
	Email address is <a href="mailto:editorvlmsnews@shaw.ca">editorvlmsnews@shaw.ca</a>		

\*\*\*\*\*

**March Meeting** Monday, April 2, 2012  
Place: Burnside Lawnbowling Clubhouse, 274 Hampton Rd.  
Time: 7:00 p.m.

**Program** To be determined

**Executive Meeting** March 26, 2012

**Show Meeting** Tuesday, April 17, 2010  
Place: Burnside Lawnbowling Clubhouse  
Time: 7:00 p. m.

\*\*\*\*\*

## **President's Message**

**Patrick Lydon.**

As I write this report the 2012 Rock and Gem Show is almost under way and the Membership have appeared to respond in the usual positive manner to the extra demands and responsibilities that are inevitable at this time of year. I hope to outline the results of the Show in the May Report.

I would now like to focus on some special items that have received some attention at the Executive Committee. I have been asked to inform all Members that they are welcome to attend Executive Meetings as observers. If a member wishes to make a special presentation to the Executive, they should provide a written outline of their proposal, so that the Committee is prepared to respond to the submission. This is just an act of courtesy. Finally, the Committee has resolved to place a "Suggestion Box" at the Members Table at all future monthly meetings and we hope that these measures will help to foster an air of inclusiveness amongst the Membership. Patrick Lydon, President

## Editor's Remarks

**Leni Gagnon.**

Well, I managed to get my first issue out without too much angst. I made a few mistakes but I hope to correct them if I haven't done so already. My apologies if I inconvenienced anybody. It was done inadvertently. It is a very interesting experience, but then if I gain some new knowledge, it is worth doing. If anyone has any ideas as to kind of things you like to see included, please let me know. After all, this is your newsletter and I want to make it enjoyable and something you'll look forward to reading.

Would the members be interested in a "Getting to Know You" column? We have so many new members who know little about the people who have members for quite some time. I don't necessarily mean personal information but rather your field of interest in the hobby and how you got started or having an amusing anecdote of how you got started, etc.; please let me know. I'll be looking for the first volunteer. The member does not have to be an older member; it could be a new member as well. We could make it a monthly column.

## Minutes of the General Meeting of – March 5, 2012

**Call to order and welcome guests in attendance done by President, Patrick Lydon.**

### **Minutes:**

As read or as printed in the Laphound News. Edits: Don Meyer brought to the attention of members that there was a discussion also made on the Archie Brownie Centre for the R&G show. Motion made by Herb Hellmoldt to accept changes; seconded by Bob Eveleigh. All were in favour. Motion **Carried**

### **Treasurers Report: as of Feb 29th, 2012**

Balance forward	\$23 679.43
Credits	626.89
Debits	<u>548.89</u>
General Ledger	23 758.07
Bank Balance	23 758.07
Petty Cash	<u>30.00</u>
<b>Total</b>	<b>\$23 758.07</b>

Motion to accept made by Leni Gagnon; seconded by Pierre Lambert. Motion **Carried**.

### **Correspondence:**

- \_GMFC Scholarships now open for members to apply for a potential qualifier. Contact Secretary for applications, criteria, etc. and she can email the forms, etc. to interested parties.
- \_Raft River Rockhounds, Clearwater, BC, Rendezvous May 18-21

### **Sunshine Corner:**

- \_Sandi Burns and Gerri Irwin are in hospital – no visitors at this time.

### **Workshop:**

- \_Basic Lapidary course started this Thursday  
and no show for this. Reminder that it is on again this coming Saturday (March 10th)
- \_During the Rock & Gem show students can work at the club demonstration table

### **Island Zone:**

- \_Report made by Magdalene Magon that it is our year to host the We are hosting the Island Gemboree and it is planned to be held at the Luxton Fair grounds in the first weekend of June. Volunteers will be needed. Plans are still being formulated and update report will be given.

### **Program:**

- \_Dr. Elaine Humphrey, STEM Technologist and Lab Manager at the Science Centre, UVIC, gave a wonderful PowerPoint slide show of examples that the electron holography microscope can do with its resolution as small as one-fiftieth the size of an atom (a hundred microscopes in one). Enjoyed by many and she was very entertaining and easy to understand. Stay posted for a field trip to her lab being planned as a separate field trip outing that Carrie, Secretary will get arranged.
- \_Ideas were encouraged by the membership for April Program. Suggestions at this time are for a Walk and Talk or to have UVIC professor, Elaine Humphries, do rock identification.
- \_May is the Club Auction and June is the Strawberry Social.
- \_Reminder that there remains no one in this role to plan Programs and has been taken under wing of the Executive. Please step up to fill this role if anyone is interested.

**Membership:**

Nothing to report

**Library:**

· \_Leni Gagnon reported that she has 2 copies of a set of series written for the newsletter in Calgary on photographing minerals and jewelry with a digital camera – a How to Do series. Leni made a request to make a copy for the library and paid for from the funds. This was granted by Patrick Lydon, President to do so.

**Field Trip:**

- \_Report from Gilles Lebrun - 19th Feb. @ French Beach a few specimens found. No field trip for March as the Rock & Gem show will be in hand.
- \_Greg Shea reported that along with the Cowichan Valley Rock club a field trip Thursday (March 8th) to several sites from Sooke to Goldstream on geology of these areas hosted by John Gunton. Meet up planned 9:00 a.m. @ Westshore Parkway and Hwy 1 and likely car pool and bring a lunch, etc.
- \_Greg Shea is updating plan for Britannia Mines, tour on the mainland. Trip 20+ all together interested from both clubs (Cowichan and ours).
  - 12-20 people for a van rental required.... 3rd or 4th week of April and hopefully on a weekend but cost varies compared to weekday. Need a class 4 licence required to take a van and seeking a member that can do that if rented. Most viable route would be via Naniamo.
  - Contact Greg for further information and/or can volunteer assistance for this trip.

**Laphound News:** Leni Gagnon spoke to members attempts to pick up the learning curve on taking over the role so to be patient in reflection to the first LHNs she just posted.

**Gem Show:** Don Meyer reporting on behalf of Gerri Irwin as she is in hospital.

- \_Meeting the previous week and the final lay out plan for the hall is what is being negotiated due to the different tables available since renovations of hall.
- \_Kid's corner is now going to be upstairs in a large cloakroom.
- \_Remains to obtain 7' tables as only 6' tables are in the hall.
- \_Looking for items from membership to add to Competition Case for judging.
- \_Sign up sheet at meeting for show.
- \_Need help for set-up on Thursday @ 8: a.m.
- \_Security, Front door and kid's corner has largest gap plus needs for the club table to promote our interests.
- \_Calls will be put out to draw in more necessary help/volunteers as we have a lot of gaps in covering different areas.

Discussion on floor from various members around **security concerns** to prevent light fingered individuals from stealing. Outcome **Motion** made by Lorena Gordon **to not let people in unless they have paid period even if at the last hour of show**; Seconded by Bob Eveleigh. Motion accepted by membership and **Carried**.

**President's Report:**

- \_Reminder that all members are able to attend Executive meetings but if a declaration is to be made they require to make it known to President in advance so it can be added to agenda.
- \_Suggestion box will be created for membership to voice any concerns, suggestions, etc. It will be hopefully put together fairly soon and be at the meetings.

**Unfinished Business:**

- \_Carrie Maier reported that due to low numbers interested from last month hand count, she will not be looking at purchasing Swag items at this time.
- \_She made known that we have our membership badges (which can be sewn onto hats, etc.) available for \$3.00 at members event table and car stickers as well (quivery cost for these). Leni Gagnon will look at what we have in numbers left and inquire how to get more in stock.

**Announcements:**

Frances Shew would like to invite others to work on a Japanese landscape being made in her home that is a continuous, ongoing project. Members are welcome to contact her to assist her with this.

**Display Table:**

Jewelry, rock specimens displayed, also showing Frank McMahon with his work. Brian McMillan still has lapidary grit for sale.

**New Business:**

none.

**Member Event:**

Enjoyed by all... new approach to cut down length of time was tried as suggested by President at

the beginning of meeting, so can get on to Program event and the program doesn't run late into evening.

**Adjournment:**

Motion by Bob Eveleigh and seconded by Leni Gagnon

\*\*\*\*\*

**Field Trips**

**Gilles Lebrun.**

April 15<sup>th</sup> – to Mt. Tzuhalem in Maple Bay.  
Meet at the Senior Centre at Juan de Fuca at 9:00 a.m.

**Membership**

**Kathleen Kane.**

Many thanks to those who volunteered their time at the Membership table at the Rock & Gem Show. Your commitment and assistance was very much appreciated. The membership numbers have now been finalized and will be reported to the provincial BC Lapidary Society by the end of March. Including those that renewed and joined at the Show, we have a total of 133 members made up of single adults (61), single parents (5) with kids (9), and couples (29 x 2 = 58).

As a result of the Show, we should expect to see not only the six new members who joined there, but many of the other interested folks who took an information sheet about our Club. So in the next few months, if you see someone at the meetings you don't know, please take a moment to introduce yourself and welcome them to our midst.

**Sunshine Corner**

**Lorena Taylor.**

There have been no reports of illness except for colds that always seem to flourish at this time of year.

**Library Report**

**Leni Gagnon.**

We have been given permission Make a copy of a series of articles written for the Charlotte Gem & Mineral Club Newsletter. The author, Ron Gibbs, wrote them between 2009 and 2011 and is so clearly written and explained that the complication would be an asset to any library. "USING A DIGITAL CAMERA TO PHOTOGRAPGH MINERALS AND JEWELRY" covers such topics as Camera Functions, Table Top Lighting, Specific Lighting Set-Ups and editing. The articles have many color photographs of examples to show what to look for.

The compilation of articles will be a unique edition to our library and members who want to photographed their work and collection will be pleased with outcome.

**Zone Report**

**Cameron Speedie**

The clubs will continue to work together and perhaps do some activities together such as field trips.

The Campbell River Ripple Rock Gem and Mineral club will be having a gemstone and cabochon competition at their show this year.

A workshop for show chairs has been called for

A website for Zone Delegates is now up and running.

## SHOWS & EVENTS

- March 24-25 **City of Port Angeles**  
Vern Burton Community Center, 308 4<sup>th</sup> St., Port Angeles
- 30-31 **Mt. Baker Rock And Mineral Club**  
Bloedel-Donovan Park, 2211 Electric Ave., Bellingham, Washington
- April 13-15 **Abbotsford Rock and Mineral Show**  
Agricultural Recreation Building, Central Fraser Valley Fairgrounds,  
32470 Haida Drive, Abbotsford
- May 5-6 **Courtenay Gem & Mineral Club &  
Parksville & District Rock & Gem Club**  
Royal Canadian Legion, 367 Cliffe Rd., Courtenay, B.C.
- June 9-10 **Ripple Rock Gem and Mineral Club**  
Timberline Secondary School, 1681 South Dogwood St., Campbell River
- July 21-22 **Okanagan Gem Show**  
Winfield Memorial Hall, 3270 Berry Rd., Winfield, B.C.
- Sept. 8-9 **Clallam County Gem & Mineral Association**  
Vern Burton Community Center, 308 East 4<sup>th</sup> St., Port Angeles, Washington

### CONTEST

**Ripple Rock Gem and Mineral Club of Campbell River is challenging members of other clubs to enter the People's Choice Contest at our annual Rock and Mineral Show in June. The winning member will not only have bragging rights (and a ribbon) but also have their club recognized in any rockhounding publication. Please check out our website for more information [www.ripplerockgemandmineralclub.com](http://www.ripplerockgemandmineralclub.com). Go to the Rock Show 2012 tab and you will find the link to the People's Choice Contest guidelines, contact and entry forms.**

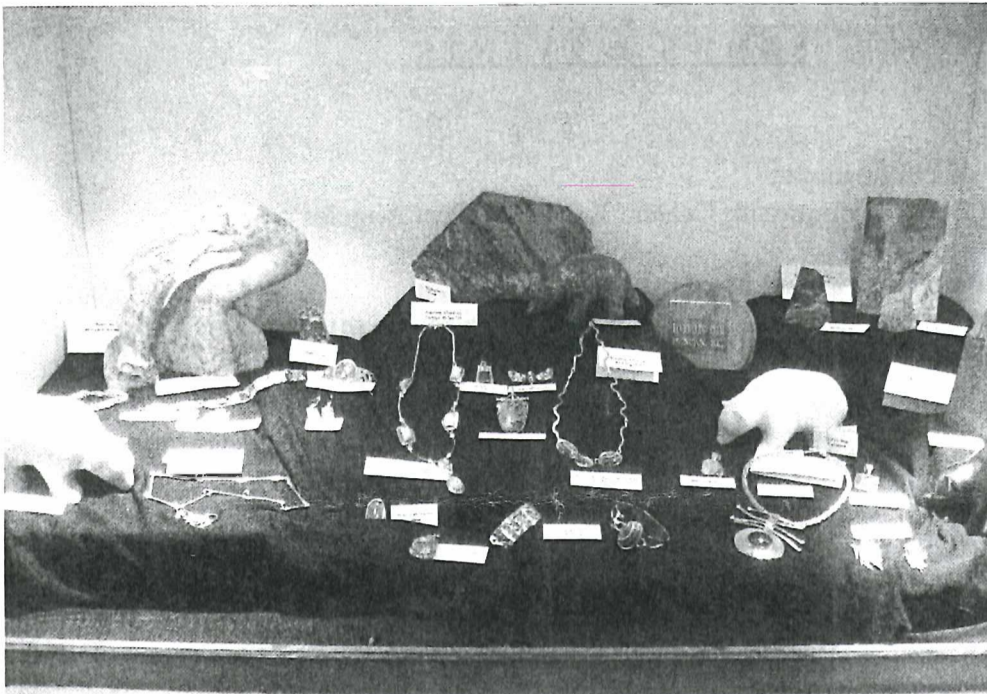
### Victoria Rock and Mineral Show

Another show is now under our belt and it seems to have been another wonderful success. Many positive remarks were overheard from visitors as they were leaving. The dealers also reported to have had a good show.

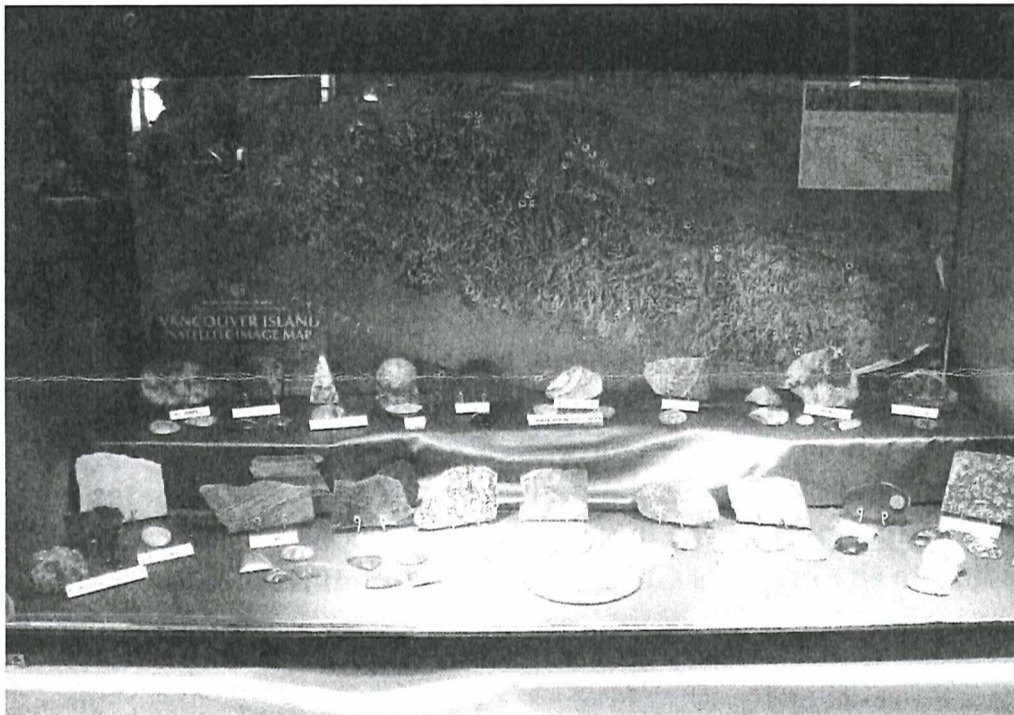
Undertakings of this size need a lot of planning and cannot be successful without the work of a lot of volunteers. I hope that you came out with a feeling of satisfaction and hopefully made some new friends. So thank you all for your time and effort. A special thank to Don Meyer for stepping in for Gerri Irwin in the 23th hour of the planning stage.

The big prize for the weekend was a Harbour Air Tour for 4. A prize many people were hoping to win. The winner was Rob Stephen, who was very to win it.

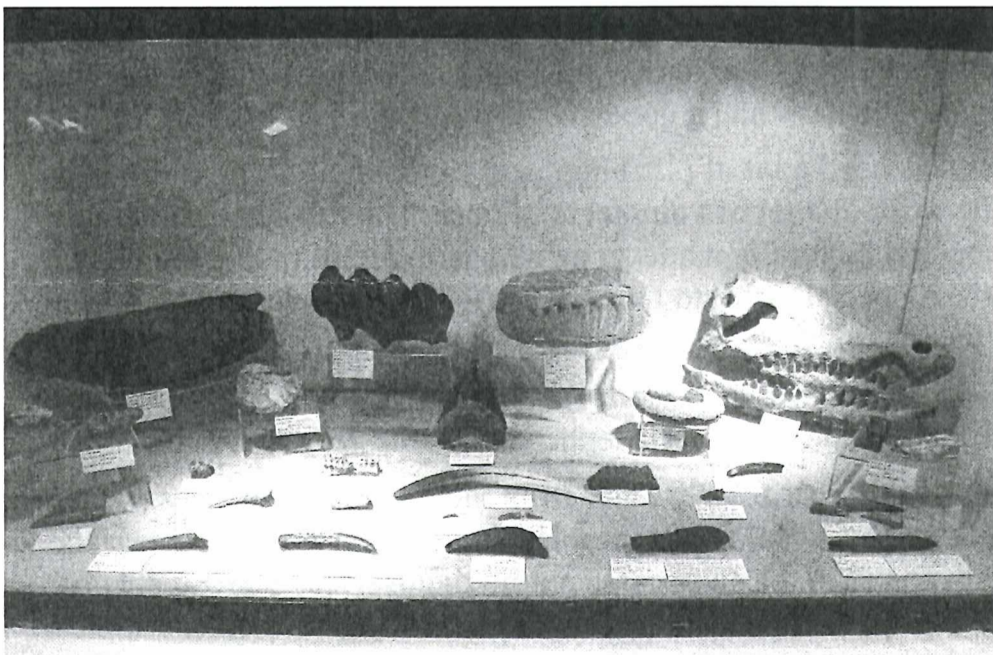
The theme for the show this year was "Beauty from the Beach". Every year we get some very interesting and beautiful showcases. However, I think that this year the Clubs and members who put in the showcases outdid themselves. The winners of the showcases were: Cowichan Valley Rockhound Club, Campbell River Ripple Rock Gem & Mineral Club and Leni Gagnon.



Cowichan Valley Rockhound Club



Campbell River Ripple Rock Gem and Mineral Club



Leni Gagnon

**LOST AT SHOW**

A turquoise and silver bracelet with a turquoise cross on it. was lost . It has sentimental value, please contact me if you found it or know anything about it.

Contact Donna Porter at 250-384-0376

**THOUGHT OF THE DAY**

To love what you do and feel that it matters, how could anything be more fun?

Katherine Graham (1917 – 2001)

**DID YOU KNOW?**

CORUNDUM is an important abrasive in making large equipment parts. It is also used as grit in sandpaper. Emery paper is an impure variety of corundum.

FLUORITE is used in the lenses of expensive cameras and telescopes to minimize distortion. This is because fluorite has low light dispersion.

LOW LIGHT DISPERSION is the breaking of white light into its component colors.

Reference: Beginners Guide to Minerals and Rocks

By DR. Joel Grice 2010

**APRIL BIRTHSTONE****DIAMOND**

Diamonds are one of the most beautiful gems. It is highly sought after all over the world for its elegance and brilliance. Diamond comes from the Greek word "Adamastos"- meaning "Invincible". It is said to bring its owner wealth, happiness and protection.

Diamonds are formed deep within the earth's crust where the heat and pressure are enough to crystallize the hardest of all minerals. Eventually volcanic activity brings the diamonds closer to the surface of the crust. They are often found in a volcanic rock formation called "Kimberlite". Weathering will bring the diamonds closer to the surface and they are washed out into a river. Glaciers can also transport diamonds and deposit them in ancient sea bottoms. They can also be produced synthetically.

Basically, diamonds is CARBON as is graphite. Although diamonds are a 10 on Moh's scale of hardness and graphite is only 1-2, graphite is much more stable. The biggest weakness of the diamond is that it has 4 directions of cleavage. Given a sharp blow in one direction the diamond will split. This causes the gem to be very difficult to cut and it is best left to a skilled craftsman to facet.

The strengths of the diamond outnumber its weaknesses. It is 4 times harder than Corundum and is the best conductor of heat in the world. Diamonds play an important part in industry as they are used in cutting and polishing.

However, its most prized qualities pertain to its characteristics, which make it so valuable as a gem. One of the most attractive qualities is its ability to reflect and refract light into vivid flashes of brilliant color. Diamonds are very durable and have a very low reactivity to chemicals. It is rare (it takes one ton of rich ore to recover 1 carat of diamond).

\*\*\*\*\*

### **RHODONITE For Sale**

Large chunks from 20 – 300 pounds. The miner thinks some sculptors should get their hands on it, or someone with a big saw..... He hasn't placed 'a per pound' price on it, so Dicker. He is in Youbou.

If anyone is interested he will take you up to the mine. He can't get the material out right now. One must be fit to get up there. I gather it is 'on foot'.

If interested contact Janice Boyes – Courtenay Rock and Gem Club

[janboyes@telus.net](mailto:janboyes@telus.net)

### **JEWELRY MAKING EQUIPMENT For Sale**

Moving to a smaller home and would like to sell my mother's jewelry making equipment. There are quite a few tools and a wooden cabinet with drawers of supplies.

If interested contact Sandra Donaldson at 250-656-3720 or 250-882-0584 *CALLED ALREADY SOLD*

### **EQUIPMENT For Sale**

1. Polishing plates and pads – image 0001 – 28.3 kb \$15 obo
2. Microscope base and filter system – 0001 – 31.3, 0002 – 21.1 kb \$20 obo

For more information call Mike 250-213-6809.

**HAPPY EASTER EVERYONE!!!!!!**

