

LAPHOUND NEWS

VICTORIA LAPIDARY & MINERAL SOCIETY

P.O. Box 5114, Station B

Victoria, B.C. V8R 6N3



Volume 56 -- 10

Website: - www.vlms.ca

January 2014

BOARD

President	Mike Hill
Vice President	David Hosking
Past President	Patrick Lydon
Secretary	Vanessa Steffens
Treasurer	Greg Shea
Members	Brian McMillan
At Large	Yvan Gagnon
	Vacant
	Leni Gagnon

NEXT MEETING:

When: Monday, January 6, 2014

Place: Burnside Lawnbowling Clubhouse
274 Hampton Rd.

Time: 7:30 p.m.

PROGRAM: Annual General Meeting and if time permits "The Stone Carvings of Konovalensko" by Leni Gagnon

COMMITTEES

Programs	Vacant
Librarian	Sylvan Burnside Christine Patton
Show Chair	Gerri Irwin Yvan Gagnon
Membership	Jessica Hedberg Murdo Smith
Field Trips	Gilles Lebrun 250-382-6119
Sunshine Corner	Lorena Yaylor 250-384-0775
Refreshments	Molly Beddington Barbara MacKenzie
Workshop	Brian McMillan Vanessa Steffens
Editor	Leni Gagnon 250-479-6214 editorvlmsnews@shaw.ca

EXECUTIVE MEETING:

When: Last Monday of every month (no meeting July, August & December)

Place: Club Workshop, 286 Hampton

Time: 7:00 p.m.

GEM SHOW 2014 MEETING:

When: Tuesday, January 21, 2014

Where: 274 Hampton Rd.

Time: 7:00 p.m.

FIELD TRIP: No planned field trip this month but if weather is good Gilles would be willing to go if anyone is interested. Give him a call to make arrangements.

The workshop will be closed until January 9, 2014.

PRESIDENT'S MESSAGE

Mike Hill

I hope that everyone enjoyed the holidays.

This month we will be having our Annual General Meeting to sum up another year for VLMS. Of course, that means starting over again with maybe some new executive members who will be elected at the AGM. I encourage you to support them as you have in the past.

ISLAND ZONE REPORT

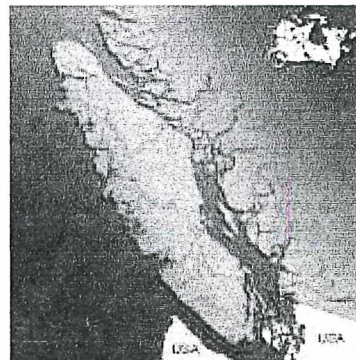
Patrick Lydon

The Island Zone Meeting was held in Parksville, on Saturday the 30th of November, in the beautiful home of Marion Barclay. A fine lunch was provided and we had delegates from all of the six clubs apart from the Parksville Club who have elected not to nominate delegates at this time. This development is a serious concern as the Zone can not act as a democratic organization if it does not have representation from all of the Clubs on the Island. As President of the Zone, I indicated a wish to communicate with the new President of the Parksville Club shortly.

The Meeting was a most cordial affair and the minutes of the last meeting were read by our Secretary Treasurer Greg Shea. Older Reports from Linda Strand that should have been read at the Gemboree Meeting in July were also read at this meeting. A motion to change the Gemboree meeting, scheduled to take place at the Cowichan Club, was debated for some time. The motion was successful and

the Alberni Club has offered to allow the Cowichan Club to avail of its scheduled time to hold its next Gemboree. The details will be in the minutes. Summer Camp will take place from August the 3rd to the 8th in Port Alberni and all Zone members are asked to make special efforts to attend. Dave West was very happy to report that our BCLS President Mr. Doug Murray will be attending the Port Alberni Rock and Gem Show on the 8th- 9th of March 2014. The details of this very important event will be announced shortly.

The meeting ended with a strong vote of thanks to Marion Barclay for her hospitality and kindness. As President of the Zone I wish all our members a safe and enjoyable holiday season and best wishes for the New Year ahead. Slainte! Pat Lydon



GEM SHOW 2014

Gerri Irwin/ Yvan Gagnon

The Westshore Mall in Langford annually has a Hobby Show. In 2014 it will be held From January 31 - February 2. VLMS has a booth in that show to promote our Mineral & Gem Show in March. We will be doing so again this year. We are looking for

volunteers to man to the booth. If you can spare a couple of hours to help out please contact Gerri Speedie at 250-385-0597 or email - girwin@telus.net.

EDITOR'S THOUGHTS

Leni Gagnon

Another new has begun and it is time for the AGM and elections of a new executive and naming of committee heads. Another year of planning activities to enrich the club and hopefully help the club to grow.

January also means our annual pilgrimage to Quartzite and Tucson, Arizona. This will be the 6th year that we will be going to explore some more interesting places. This year we hope to meet up with several friends while we are there.

Yvan will probably be looking for agates and jaspers for his lapidary endeavours; I will be looking for species of rocks that are not part of my collection yet. I must say that they are getting harder to find. The ones I am looking for are the rare and rarer, which comes down to more and more expensive.

MEMBERSHIP

Jessica Hedberg/Murdo Smith

The membership desk is expected to be busy with renewals at the January meeting and as this is our Annual General Meeting as well as our monthly meeting we expect a rush before the meeting opens. Payment of dues for renewal by cheque would

help in getting receipts and club membership cards processed quickly. The British Columbia Lapidary Society annual membership report will need to be finalized by the middle of February. It would therefore help us to meet this deadline if those who will not be at the January or February meeting were to send in their renewal, mailed to the club at the address given at the top of the Laphound News.

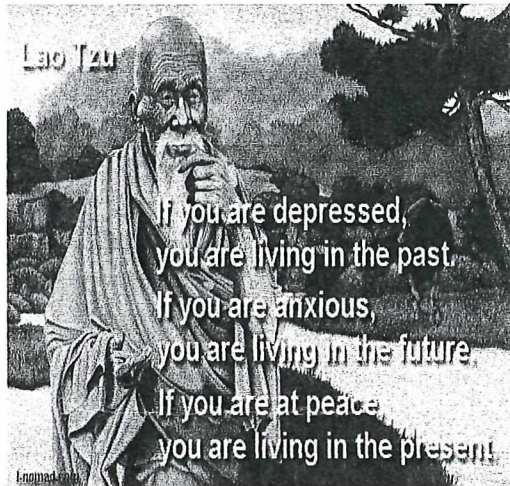


SUNSHINE CORNER

Lorena Taylor

Patrick Lyden had eye surgery in December. We hope that everything went well and we wish him a speedy recovery.



THOUGHT OF THE DAY**NOMINATIONS FOR ELECTION AT
THE AGM****Patrick Lydon**

The present officers of the executive have consented to run for office again. Names of any member wishing to run for office will be accepted from the floor. New names for Members At Large office will have to be elected except for Leni who still has one year of her two-year term to go.

We will need to elect officers for 2 two-year terms and 1 for a one-year term to replace the vacancy created when Vanessa took over as secretary. Brian McMillan, Yvan Gagnon and Dave Mullett have consented to stand for these positions.

Please come out to the AGM to elect your officers and show your support for the club.

SHOWS AND EVENTS**JAN - FEB**

1 - 28 **QUARTZITE, ARIZONA**
Various Shows
(check internet for individual shows)

24 - 16 **TUCSON, ARIZONA**
Various Shows
(check internet for individual Shows)

FEB

8-9 **WHIDBEY ISLAND
GEM CLUB**
51 Jerome St.
Oak Harbor, Wash.

14 - 16 **OAMS GEM &
MINERAL SHOW**
1945 SE Water St.
Portland, Oregon

MARCH

1 - 2 **MAPLE RIDGE
LAPIDARY CLUB**
12460 Harris Rd.
Pitt Meadows, BC

8 - 9 **ALBERNI VALLEY
ROCK & GEM CLUB**
3720 Moore Rd.
Port Alberni, BC

14 - 16 **VICTORIA LAPIDARY
& MINERAL SOCIETY**
95 Bay St.
Victoria, BC

In the days of uncertainty, the only thing you can count is your fingers.

SHOP HINTS

Brad Smith

TWISTING WIRE

Twisting wires together can be done with an old hand drill but goes much faster with a power tool. My preference is to use a screw gun, although a Dremel or Foredom should do well. Just make a little hook out of coat hanger wire (or use a screw-in cup hook) and chuck it up in your screw gun. Fasten the ends of the wires in a vice and slip the other ends on your hook. Keep a little tension on the wires as you twist. Note that a power drill is too fast a tool for this unless you have; one with a variable speed control.

SMOOTHING EARWIRES

Any time you make your own earwires, the hardest part for me is to sand and polish the end that's inserted into the ear. Any sharp edge there is no fun. I've tried using sanding sticks, cup burs, and silicone polishing wheels. I've tried buffing on a Zam wheel, and I've tried spinning the wire in the Foredom to polish the tip. While all of these techniques do the job, none are very easy or fast.

Then it occurred to me - I could melt the wire smooth. One quick touch in the flame of the propane/oxygen Little Torch does the trick - not enough to form a bead on the wire but just enough to round off the tip

.....

Use a glasscutter to cut thin pieces of agate. It works well and saves time. Remember to put light oil on the cutting wheel.

Source: The Australian
Lapidary Magazine

**WHERE MINERAL SPECIMENS MAY
BE FOUND**

Leni Gagnon

In entering information into my database I found that most of my specimens came from the various sources listed below. There are probably other sources as well.

CLAIM: - A portion of land legally held either by a miner or a mining company.

DRIFT: - A Horizontal opening that follows along the length of a vein or rock formation as opposed to a crosscut, which crosses the formation.

DUMP: - A pile of broken rocks or ore on the surface of the ground.

LEVEL: - The horizontal openings on a working horizon in a mine; it is customary to work mines from a shaft, establishing levels at regular intervals, generally about 50 meters apart.

MASSIVE: - A mineral deposit characterized by a great concentration of ore in one place, as opposed to a vein deposit.

MINE: - The underground workings having a roof of undisturbed rock from which mineral matter of value is extracted.

OPEN-PIT MINE: - A mine that is entirely on the surface. Also referred to as an open-cut or an open-cast mine.

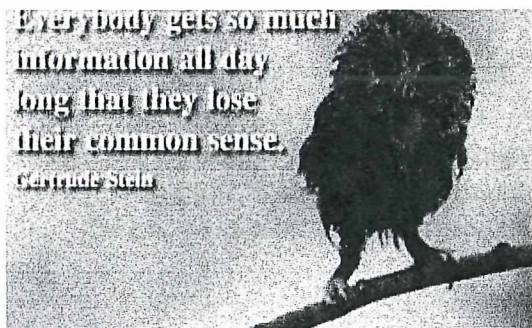
QUARRY: - An open surface mineral working, usually for the extraction of building stone or other minerals. It is

distinguished from a mine because a quarry is open at the top.



Quarry at Mont St. Hilaire, Quebec

Source: infomines.com &
The Northern Miner
Photo: Internet



Boren's Law

1. When in doubt, mumble.
2. When in trouble, delegate'
2. When in charge, ponder.

Source: Unknown

QUIZ

QUIZ: TRUE OR FALSE

1. Diamond is the hardest known substance.

2. Quartz is the most abundant mineral in the earth's crust..
3. Diamond is the hardest known substance.
4. Quartz is the most abundant mineral in the earth's crust..
5. Hematite is the primary ore of zinc.
6. Diamonds form in the earth's upper mantle.
7. All gems are mineral crystals that have been cut and polished into objects of great beauty.
8. Minerals found in some meteorites were formed in the outflows of red giant stars or around supernovas.
9. Sedimentary rocks commonly form as a result of weathering and erosion.
10. The Hope diamond is the world's largest diamond at 45.52 carats.
11. All sapphires are blue.
12. Gems are typically measured by their weight in pounds.

LAVA CAST FOREST

Leni Gagnon

It has become obvious to Yvan and me that some of the most interesting places in our travels are those that are least expected. When we start out, we usually have a destination in mind but how and when we get there is often questionable. When we come across signs for places that may interest us – we follow them. Of course, the places usually have to do with geology or airplanes, but anything is fair game.

One such place we came across happened in Oregon this past September when we were returning

from Utah. We had decided to go to The Dalles to see the Columbia Gorge that had been created by The Great Missoula Flood that occurred at the end of the last ice age. We were driving north along highway 97 about 10 miles south of Bend when we saw the sign – Lava Cast Forest - 9 miles. Certainly a must see stop for us.

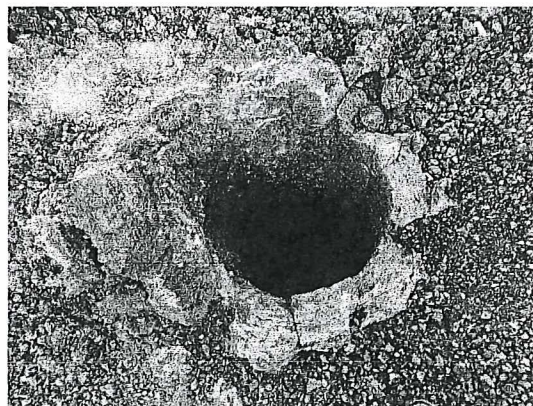
To get to the actual site we had to drive the 9 miles along an unpaved road through a forest. That alone was worth the drive. Unexpectedly, we saw a tractor moving through the trees (there was no road there). At the end of our road we came to our destination. It was pretty much deserted at the time except for two gentlemen who stopped to talk with us and gave us some tips. There is one area where there was a paved path that is about 1 mile long. YAH! Something accessible to me; many times I am unable to get to places I want to go because of mobility issues.



The forest is located in the Newberry National Volcanic Monument area and is at an elevation of 5750 feet and covers 5 square miles. This area had its origins around 6000 years ago when the Newberry Volcano erupted and the lava from several side vents

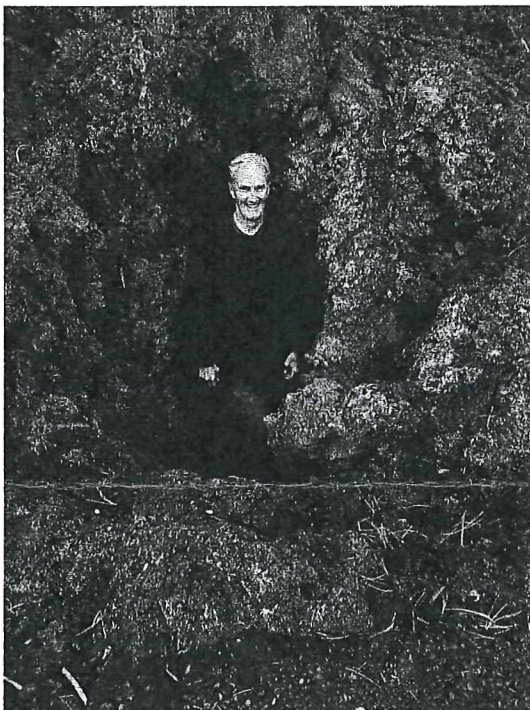
flowed over the forest. The kind of lava that is found here is known as "pahoehoe". Pahoehoe is a Hawaiian word meaning, "smooth unbroken lava". Also contained within the monument area are cinder cones, lava flows, caves, lakes, streams and waterfalls. Some of these areas were closed that day because after the summer some areas are only open during certain days of the week.

The casts or tree molds were created when hot lava flowed through the forest. As the lava came in contact with the trees it solidified around the trunks of the larger ones and cooled, encasing the trees in stone. The trees eventually died and left the casts.



One of the casts

As we went along the meandering paved path we not only saw the casts but the beautiful surrounding scenery. We saw trees that were unusually shaped and gnarled, flowers, Indian Paintbrush, and Ponderosa Pine. There were many chipmunks scurrying along the lava bed getting their food supply ready for the coming winter.



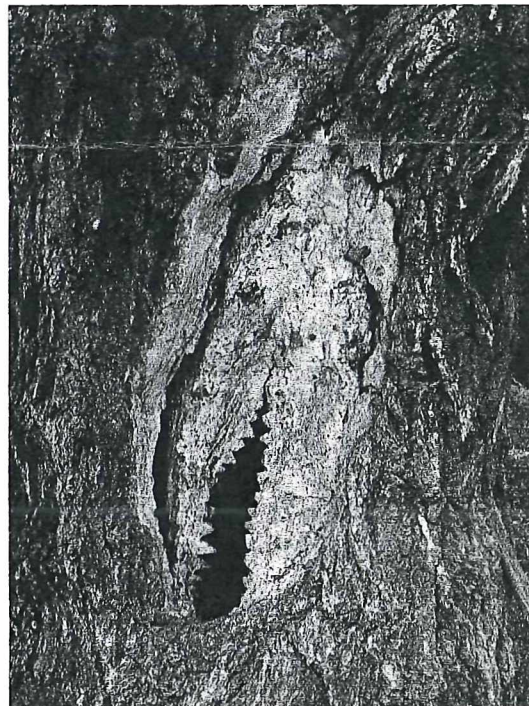
Yvan standing in one of the casts



What could have caused this Ponderosa Pine to grow like this?

At one point we came to a very unusual sight, a tree trunk that seemed to have a dinosaur's head

inside of it. We couldn't believe our eyes! Of course, we had to have a closer look. As we got closer we noticed that it was an optical illusion caused by a tree branch breaking off the tree sometime in the past and then someone at a latter time cutting what looks like teeth into it.



The dinosaur caught in the tree

We would have liked to stay longer but the rain was starting to come down. Now that we know of the place, it is certainly going to go on our bucket list of places to revisit.

There is enough carbon in the cremated remains of a human body to make 50 small diamonds.

When women are depressed they either eat or go shopping. Men invade another country.

DID YOU KNOW?

There really is a blue moon. An actual blue-colored moon can occur when the atmospheric conditions are right. The effects come from forest fires or volcanic ash sending tiny particles of ash mixed with drops of water into the atmosphere. The mixture is carried in the wind, spreads and refracts moonlight causing a blue haze – making the moon appear blue.



CHINESE NEW YEAR

This year the Chinese New Year will be on January 31 and it will be year of the horse.



KUNG HEI FAT CHOI

ANSWERS TO QUIZ

1. True: On the Moh's scale of hardness used by mineralogists, the diamond is number 10.

2. False: Although Quartz is abundant, the most common minerals in the earth's crust are those in the feldspar family: orthoclase and plagioclase. They are the dominant constituents of most igneous and metamorphic rocks.
3. False; Hematite is iron oxide, the primary ore of iron. The primary ore of zinc is the mineral sphalerite.
4. True: Diamonds form more than 100 miles below the surface of the earth.
5. True: Most gemstones are fashioned from a mineral crystal or from a rock. Some gems, such as pearl, coral, amber and jet are not technically minerals because they were derived from living organisms.
6. True: Some meteorites contain very tiny diamond grains that scientists have determined must have formed outside our solar system, probably when a nearby star exploded. These grains are among the oldest known objects in our solar system.
7. True: The weathering and erosion process caused by flowing water, freeze and the thaw cycles and wind break rocks apart and reduce mineral grains to tiny fragments. These fragments are washed into rivers and carried as silt and sand to oceans where they are deposited as sediment that eventually form sedimentary rocks.
8. False: at 45.52 carats, the Hope Diamond is the largest known deep blue diamond. The largest cut diamond is the 545.67 carat Golden Jubilee.
9. False: Sapphire, a gem variety of the mineral corundum, can be found in every colour except red (rubies)
10. False: Typically, a gemstone's weight is measured in carats. The word "carat" comes from the word "carob", a tree that grows in Mediterranean region: for centuries carob seeds were used as a standard for weighing precious stones.

