

LAPHOUND NEWS

VICTORIA LAPIDARY & MINERAL SOCIETY

P.O. Box 5114, Station B
Victoria, B.C. V8R 6N3



2224.95
111.2475

2224.95
111.25
2036.20

Vol. 56 -2

Website: www.vlms.ca

March 2013.

President	Mike Hill	Show Chairman	G Speedie/V Steffens
V. President	David Hoskins	Librarian	S Burnside/C Paton
Past President	Patrick Lydon	Sunshine Corner	Lorena Taylor
Secretary	Carrie Maier		Phone; 250-384-0755
Treasurer	Greg Shea	Field Trips	Gilles Lebrun
Members	Vanessa Steffens		Phone: 250-382-6119
At Large	Yvan Gagnon	Workshop	B McMillan/V Steffens
	Brian McMillan	Programs	Vacant
	Leni Gagnon	Membership	Kathleen Kane
Editor	Leni Gagnon, 472 Meredith Crescent, Victoria, B.C. Phone: 250-479-6214 Email address is editorvlmsnews@shaw.ca		

Meeting

Monday, March 4, 2013
Place: Burnside Lawnbowling Clubhouse, 274 Hampton Rd.
Time: 7:30 p.m.

Program

Rock and Gem Show Kick-off

Executive Meeting

Last Monday of every month
Place: Les Passmore Centre, (club workshop)
Time: 7:00 p.m.

Mineral Show Meeting

To be announced

President's Message

Mike Hill.

I encourage all the members to support our upcoming Rock and Gem Show on the 15^h-17th of this month. I hope to see you there at some point of the show.

Minutes of the General Meeting – February 4, 2013

Call to order and welcome by Mike Hill, President
Guests welcomed to the meeting.

Minutes: January published in LHN – no errors or omissions.

Motion by Patrick Lydon to accept and seconded by Sean Maier. **All Accepted** as read.
Carried

Treasurer Report: as of January 31, 2013 read Motion to accept as read made from Jerri Irwin; seconded by Patrick Lydon. **All in Favour and Motion Carried.**

Correspondence: emails regarding members interested in joining clubs from either Parksville or Courtney travelling as a group by ferry then be picked up by a bus to attend BCLS R&G show, April 13th (Parksville may consider going 14th, Sunday depending on how many want to go then). A gentleman named Lafir, GemstoneGuru, who writes about gemstones on his blog and wants to invite any constructive criticism, suggestions, feedback. As well, he is looking to feature any topics that are of interest to the gemstone and gemstone jewelry world. His site is <http://GemstoneGuru.com>

Sunshine Corner: Wally Friedolins in hospital. Betty Goodwin is moving into an independent care home and sounds quite pleased about this. A condolence thank you card received from the Valkard Family.

Workshop: Brian McMillan: Two courses going, one Thursday night and Saturday. Items picked up for supplies related to silversmithing. New saw required and will be purchased upon approval by the Executive.

Mike Hill: **Resolution** made last year about **workshop budget allowance** voted on by membership and we, the Executive, propose a motion that the resolution of w/s funding made June 4, 2012 **be rescinded** and more time to review process. Discussion had from the floor by membership and committee involved. Motion accepted by Lorena Taylor and seconded by Sean Maier. **All in favour and Passed.**

Proposal from Brian McMillan to purchase a new Genie to replace with old one (which a member will purchase from us) for \$1785.00. Discussion was had from the floor. Motion from Mike Farley and seconded by P. Lydon. **Accepted and Passed.**

Membership: reminder to submit payments by the 15th so can be submitted to the BCLS to meet their deadline.

Library: books not returned as far back as 2011 will be contacted by librarian to return.

Field Trip: Island View Beach Feb 24th @ 9:00 a.m. show up there: Agates, banded jasper, rock with garnets, fossils, flower stone, dallasite.

Rock & Gem: Mike talked about the Can West Hobby show last weekend and good turn out with thanks to the volunteers. A few new members joined as a result and the club was able to spread the news of our upcoming R&G show.

Feb 19th @ 7pm to next meeting show meeting
Sign up sheet for volunteering for show this meeting and next month.... Volunteers Needed!!!!

Island Zone: Presidential report requested for the end of February for the BCLS. P. Lydon stated that IZ are in the midst of setting up a website and that is being assisted by Cameron Speedie. Next meeting to be held March 17th @ club hall during our R&G show event.

Programs: no program (DVD, Gold Trails, did not work, old format as of yesterday when updates on laptop were made)

Laphound News: nothing to report

Unfinished Business: AGM Elections one appointed position neglected, showcase coordinator, and looking for individual to take on.

Presidents Report: none.

Announcements: Local bead shop, Beads on Broad, looking for someone to cut dallasite. Gerri Irwin is looking for someone to take over the rock slab table. Looking for small items for the Spin & Win – Rock and Gem show contact Barb Smith and/or Leni Gagnon. Mike Hill will be

teaching a silver wire wrapping course, soon, and hope to have it running before R&G show. Contact Mike @ 250-813-1241(sign up for those interested commenced at the meeting).

Display Table: fossils from Peru; crystals from Brad; Grinding powder... from Brian; Barb has petrified wood, hematite and things.

Member Event: enjoyed by all

Adjournment: Motion to adjourn by Mike Farley and seconded Vanessa Steffens.

Membership

Kathleen Kane & Murdo Smith.

Thank you to everyone for renewing your memberships in a timely manner. But our work is far from over - your membership coordinators will still be processing new members whenever they want to join. We typically sign up many newcomers at the Rock & Gem Show, so please be ready to welcome them to the meetings following the Show.

And for anyone looking to contribute to the Club in a different way, the Membership Coordinator positions will need filling effective September. Why not "try before you apply" by sitting with us during any upcoming meetings to see what we do and how things work. It's a great way to meet people and to gain a different understanding of some of the workings of the VLMS.

-Respectfully Submitted by Kathleen Kane and Murdo Smith

Editor's Remarks

Leni Gagnon.

We returned home from our trip last night (Feb 14) and now we have the time to think about all the interesting things we learned along the way. The SCRIBE meeting in Quartzite wasn't quite what I had expected. There weren't many members there (12) due to illness, bad weather and just the mileage of travel and cost required to get there for some people. However, I did manage to get some networking in. The morning of the meeting I thought I had everything planned; time change included. We were staying in Blythe California and were ready to go by 7:00 a.m. (the meeting was to start at 9:00 a.m.). We had breakfast and then left to get to the meeting early to start networking. Imagine the surprise we got when we were a half hour late; the time change happens when you get to the river between Blythe and Quartzite. Everyone had a good laugh about that. Now that we are back it is time to try out some of the things I learned.

Field Trips

Gilles Lebrun.

Rock and Gem Show
195 Bay St.
See you there!!!!!!

Sunshine Corner

Lorena Taylor.

Betty Goodwin is moving to a new residence as of Feb 26th that will have nursing assistance if required, housekeeping, meals, and laundry. She is delighted that the facility has an entertainment program. She welcomes visitors or calls at the following:

Ross Place

2638 Ross Lane Please

Victoria, BC, V87 5L5

phone number: 250-384-7452

When I was in Quartzite I met Herb Hellmoldt (member) and he told me that he had some bad luck on his way to Quartzite, Arizona. He had his motorcycle stolen. If that was not bad enough he then had the motor home he was staying in broken into and had his laptop and binoculars stolen.

SHOWS & EVENTS

- | | |
|-------------|---|
| March 9-10 | Alberni Valley Rock and Gem Show
Cherry Creek Hall, corner of Moore and Cherry Creek Roads |
| March 15-17 | Victoria Lapidary and Mineral Rock and Gem Show
Da Vinci Center, 195 Bay Street, Victoria , BC |
| April 12-14 | BC Gem Show
Ag-Rec Building, CFV Fairgrounds
32470 Haida Drive, Abbotsford, BC |

REQUEST!!!

Leni is looking for donations of small items such as cheap jewelry and small things or stones suitable for the children's Spin and Win at our Gem and Mineral Show. Please bring your donations to this month's meeting or contact Leni.

SHOP HINTS

Don'ts for Silver Workers

1. heat your solder too fast.
2. leave inflammable chemicals around in open containers.
3. solder platinum or other high-melting point metals without wearing protective eye glasses.
4. Mix lead with your silver and gold scraps
5. Leave an acid bottle open – the fumes alone will rust your tools
6. Use oil on any oxygen equipment. Oxygen and oil will combine and may cause a terrible explosion
7. Try to size a ring without first removing the stone
8. Think that just because a stone is hard that it won't break easily

Source: unknown

EPOXY 330 VERSUS CRAZY GLUE

by Tom Beaty

Both are used in the lapidary shop.

Epoxy 330 is used to glue 2 flat surfaces together. It can be used to glue a backing onto a thin slab so that it's thick enough to work with. It is also used when making triplets. It comes with 2 tubes that must be mixed together. Epoxy 330 will dry clear. If you want an amber shade, use Epoxy 220.

Put the 2 pieces of rock to be glued together, as well as both tubes of 330, on a dop-pot to warm them. This will cause the liquid in the tubes to become runny. After the 330 has warmed, put an equal number of drops from each tube onto a plastic bag. Mix them together with a small metal or plastic rod (I use a piece of an old CB radio antenna). The more you mix the two parts of the glue together the faster it will set up. Let it sit for a few second to let the bubbles come to the top of the mixture. Clear bubbles away. Then spread mixture between the two rocks and squeeze them together. The 330 will start to harden so the job must be completed within 5 minutes. Within an hour the glue should be hard enough so that touching the glue will not leave fingerprints. All epoxies should be left for at least 24 hours to achieve full strength.

If you mix the 330 with a non-porous rod, the unset glue will wipe off the rod using alcohol on a paper towel. You may also use alcohol on a paper towel to remove excess glue from what ever you glued together if you do it within an hour of mixing the glue. Rubbing alcohol

will work. However, I usually use the alcohol from a source with a higher percentage of alcohol, which works better.

The longer you wait, there will be less chance of disturbing the glue joint but the harder it will be to remove the glue.

You can use Epoxy 330 to fill cracks in slabs or cabs that you intend to polish, but super glue or crazy glue usually works better because:

1. Epoxy 330 doesn't get sucked into the crack the way super glue does.
2. When you using the polishing wheel, the Epoxy 330 will heat up and polish will be absorbed into it more so than super glue.

Crazy Glue is used to fill cracks, pits or depressions in slabs and cabochons before shaping, grinding and polishing them. After Crazy Glue has hardened, it will not be affected by heat at the polishing wheels, as much as Epoxy 330 can be.

Source; Calgary Journal December 2012; Via Rockhound Rumbblings November 2012

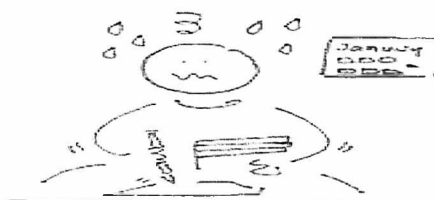
THOUGHT OF THE DAY

Good humour is a tonic for the mind and body. It is the best antidote for anxiety and depression. It is a business asset. It attracts and keeps friends. It lightens human burdens. It is the direct route to serenity and contentment.

TEST OF MENTAL FLEXIBILITY AND CREATIVITY

Can you figure out the phrases? Example 60 s in a H = 60 seconds in a hour.

- | | |
|------------------------------|-------|
| 12 - M in a Y | _____ |
| 1001 - A N | _____ |
| 54 - C in a D (with the J's) | _____ |
| 88 - P K | _____ |
| 18 - H on the G C | _____ |
| 200 - D to P G in M | _____ |
| 3 - B M (S H T R) | _____ |
| 1 - W on a U | _____ |
| 57 - H V | _____ |
| 12 - P on a F T | _____ |
| 7 - W of the W | _____ |
| 12 - S of the Z | _____ |
| 1 - W upon a S | _____ |
| 32 - F at which W F | _____ |
| 90 - D in a R A | _____ |
| 4 - H of the A | _____ |
| 4 - Q in a G | _____ |
| 24 - H in a D | _____ |



BLUE AMBER

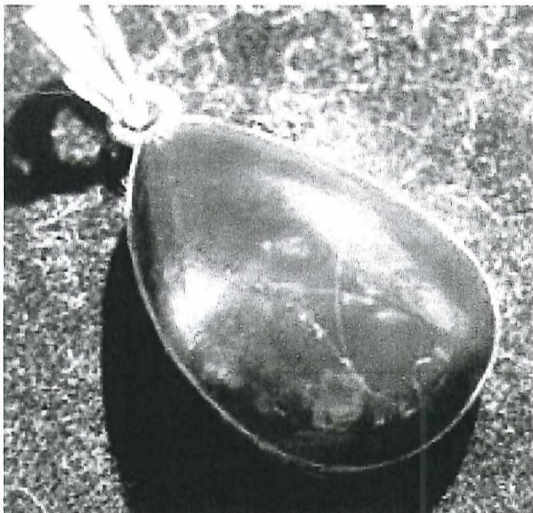
By Leni Gagnon

While wandering through some venues at the Tucson Gem and Mineral Show, I noticed that a couple of the vendors had a “New Find – BLUE AMBER”. At first I ignored it. I thought that it had to be fake; after all, tree resin isn’t blue. Then my curiosity got the better of me and I stopped to take a good look. What I found amazed me. It really was blue.

Amber is the fossilized resin of trees and can be up to 40 million years old. In prehistoric times it was used for decoration. Bead jewelry and ornaments has been found in some archeological digs. Most amber comes from Russia and the Baltic region. Some blue amber comes from Central America and the Dominican Republic and a tiny bit from Mexico. Now blue amber has been found in Indonesia in the areas of Kalimantan and Sumatra.

The amber from Sumatra is unique. It is found in the original yellow brown and reddish hues that we associate with amber but also in olive green and navy blue color. The amber is mined from lignite- glauconite clay layers of the area. The color is caused by the reflection of ultraviolet and violet colors. The amber may fluoresce a bright blue. When you look **AT** polished blue amber, you can see the reflecting blue; when you look **THROUGH** (at a light source) it looks reddish brown and/or amber color. Blue amber is said to be more rare than diamonds.

After looking at many pieces of amber I decided that it would be a good specimen to add to my collection. I bought a piece of the raw amber and a couple of pieces of the polished amber. You never know what you are going to find when you to the Tucson Gem and Mineral Show.



DID YOU KNOW ?

1. The oldest amber recovered dates to the Upper Carboniferous period (320 million years ago).
2. Because of the small insects trapped inside, amber has helped paleontologists to reconstruct life on earth in its primal phases, and more 1,000 extinct species have been identified this way.
3. The Greeks thought that amber was pieces of solidified sunshine. They believed that solidification occurred when pieces were broken off the sun as it sank into the sea.

Source: factspage.blogspot.com

Age is just a number. It’s totally irrelevant unless, of course, you happen to be a bottle of wine.

FOR SALE

Assorted rocks including, petrified wood, rhodonite, flowerstone and slabs. There are also some odd tools and books.

There is also a small display cabinet.

Please phone: Barbara at 250-479-7881 for more information

CHINESE PROVERB

The river that does not have stone will not be clear,
 The garden that does not have stone will not be beautiful,
 The room that does not have stone will not be elegant,
 And the person who does not have stone will not be eminent.

Source: book "Crystalline Treasures -The Mineral Heritage of China" by Guanghua Lui

A SHORT COURSE IN HUMAN RELATIONS

The six most important words:

I admit that I was wrong.

The five most important words:

You did a great job.

The four most important words:

What do you think?

The three most important words:

Could you please.....

The two most important words:

Thank you.

The most important word:

We.

The least important word:

I.

Source: Handout from Fotoprint Copying Center 1979

ANSWERS TO QUIZ

12 months in year

1001 Arabian nights

54 Cards in a deck with the jokers

88 piano keys

18 holes on the golf course

200 dollars to pas go in Monopoly

3 Blind Mice (See how they run)

1 wheel on a unicycle

57 Heinz varieties

12 players on a football team

7 Wonders of the World

12 signs of the Zodiac

1 wish upon a star

32 degrees at which water freezes

90 degrees in a right angle

4 horsemen of the apocalypse

4 quarts in a gallon

24 hours in a day

A WARM EASTER WISH FOR
 YOU AND YOUR FAMILY

