

LAPHOUND NEWS

VICTORIA LAPIDARY & MINERAL SOCIETY

P.O. Box 5114, Station B

Victoria, B.C. V8R 6N3



Volume 57 No.2

www.vlms.ca

March 2014

BOARD

President	Mike Hill
Vice President	David Hosking
Past President	Patrick Lydon
Secretary	Vanessa Steffens
Treasurer	Greg Shea
Members	Brian McMillan
At	Yvan Gagnon
Large	Rose Marie Spicher, Leni Gagnon

COMMITTEES

Programs	Vacant
Librarian	Sylvan Burnside Christine Patton
Show Chair	Gerri Irwin Yvan Gagnon
Membership	Jessica Hedberg Murdo Smith
Field Trips	Gilles Lebrun 250-382-6119
Sunshine Corner	Lorena Taylor 250-384-0775
Refreshments	Molly Beddington Barbara MacKenzie
Workshop	Brian McMillan Vanessa Steffens
Editor	Leni Gagnon 250-479-6214 editorvlmsnews@shaw.ca

NEXT MEETING:

When: Monday, March 3, 2014

Place: Burnside Lawnbowling
Clubhouse
274 Hampton Rd.

Time: 7:30 p.m.

PROGRAM: Mr. Dave Barclay will give a presentation. The topic is to be announced.

EXECUTIVE MEETING:

When: Last Monday of every month
(no meeting July, August & December)

Place: Club Workshop, 286 Hampton

Time: 7:00 p.m.

GEM SHOW 2014 MEETING:

When: Tuesday, April 22, 2014

Where: 274 Hampton Rd.

Time: 7:00 p.m.

FIELD TRIP:

When: March 14, 15 & 16, 2014

Where: VLMS ROCK AND GEM SHOW
195 Bay St.

WORKSHOP

When: Thursday Evenings

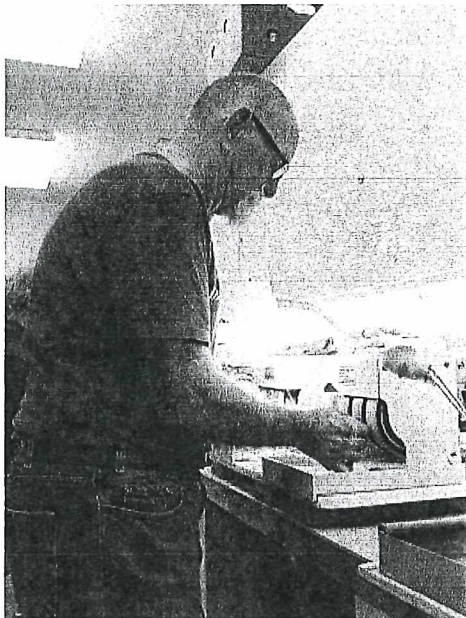
Where: 286 Hampton Rd.

Time: 7:00 to 9:00 pm.

When: Saturdays

Time: 11:00 am to 3:00 pm

Note: When classes are being run, the shop will be open from 1:00 to 3:00. Check with Brian McMillan or Vanessa Steffens.



Brian in the workshop

You must be a member of VLMS and have had the Lapidary course before you are able to use the machines

If you are interested in taking a course contact Brian or Vanessa.

Brian: 250-385-2700

Vanessa: vsteffens@telus.net

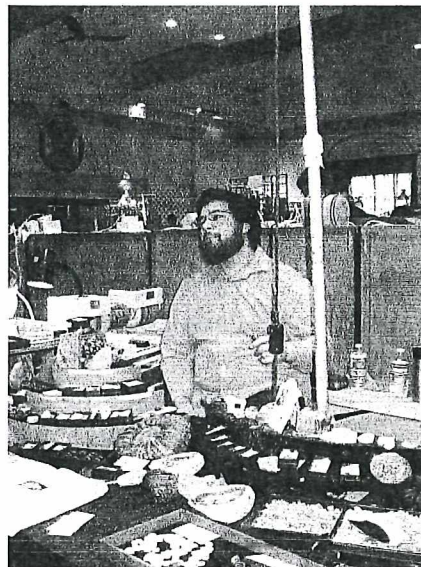
NOTE: THE WORKSHOP WILL BE CLOSED DURING THE ROCK AND GEM SHOW!!

PRESIDENTS MESSAGE

Mike Hill

The BIG Event of the year is here and I encourage everyone to attend and/or volunteer some your time.

I also encourage members to attend the meeting at Port Alberni on Saturday, March 8th at 1:00 pm, at the Cherry Creek Hall. Doug Murray of the BCLS will be there to meet the members of the Zone. This is a historic event as the BCLS has not attended a meeting on Vancouver Island before.



Mike at the VLMS Rock & Gem Show 2012

Wise sayings will often fall on barren ground, but a kind word is never thrown away.

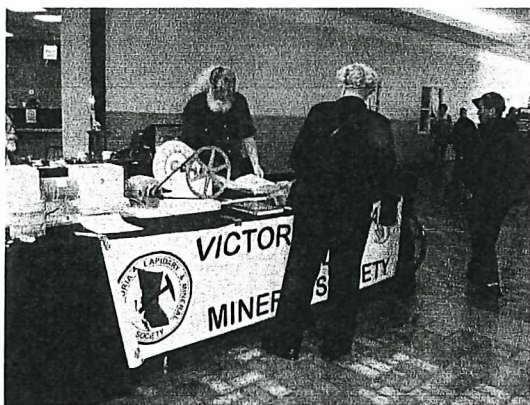
EDITOR'S THOUGHTS

Leni Gagnon

We were already to take off for our annual trip to Tucson, Arizona when something came up and we changed our minds about going this year. What a big disappointment! We were to meet Brian and Rose Marie there as well as Christine Paton. We probably would have seen Herb Helmond in Quartzite as well. However, some things are not meant to be.

We'll try again next year.

We were able to go to the West Shore Hobby Show for the first time and that was fun. It was the first time we had been in town for this event. I was surprised at the number of people (it seems like women especially) who are "closet" rockhounds. They may not be members of our club, but the interest is definitely out there.



Gilles and Lorena at the Westshore Hobby show

We also went to the Portland Rock and Gem Show, put on by the *Oregon Agate and Mineral Society*, also a first for us. I was expecting to see a show along the lines of the Denver show. I don't know why, maybe because it was being held at the Science museum. It was quite a bit smaller than our own show but it was well worth our effort in going. There were no dealers as such except for what the members themselves were selling. As always when we go to Oregon the stones available for sale were jaspers and agates. As soon as we came in through the door we were greeted with a beautifully set table of "Rock Food". Donna Ernst greeted us and graciously introduced us to other members of the club. I had the chance to network with

their newsletter editor, Leilani. They were surprised that we came all the way from Canada to see their show. The members proudly showed us their special interests including show cases and their histories, a wonderful lecture on Lake Superior Agates, meteorites and a demonstration on making spheres.



The "food" table at the OAMS show. It all looked delicious.

Here is another interesting thing about OMSI. It was formed in 1933 and is going strong with members of all ages. They also have a trailer that can be taken to schools and such places to teach about lapidary. It is equipped with saws and genies and a sphere-making machine. Upon reflecting about all the different shows we've been to over the years, it seems that each show has its own special atmosphere. I hope that our own show this month will reflect the same special atmosphere that the OAMS show had for us.

**DON'T FORGET
MARCH 14 - 16
ROCK & GEM SHOW**

SUNSHINE CORNER

Lorena Taylor

1. John Burns is home from a stay at the hospital. We hope you feel better, John. Thanks to Mike Hill who went to the John and Sandy's home to help with some chores.

2. Betty Goodwin has had another and broke her hip. She is in the hospital awaiting surgery. We wish you a speedy rovery, Betty.

3. It is with sadness that I relay this message at the request of Dave Barclay, to let everyone know that Maureen Wade passed over this afternoon at the Hospice in Kelowna. She passed on January 31, 2014 after a long illness.

Maureen will be cremated and a celebration of life will take place probably in April, when travel conditions are better.

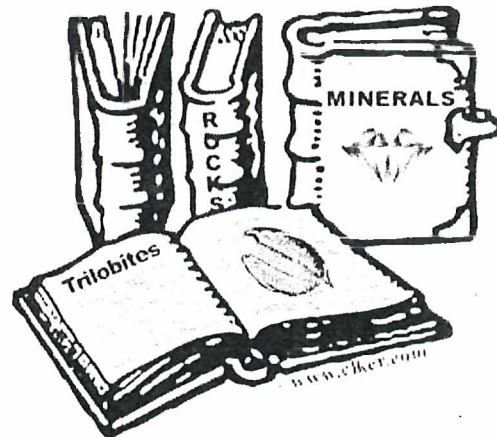
You may remember Maureen as the dealer at our Rock & Gem Shows who always had her little dog with her.

LIBRARY REPORT

Sylvan Burnside/Christine Paton

Not much happening with the Library. The VLMS first Aid kit went missing from the Library. If anyone knows where it is please return it to the library. I will be starting each month reading picks. I will chose a few books each month of suggested reading, and have them displayed on the Library table. I encourage members to check out the Library each month we have

over a hundred books that don't get looked at much. I will open the Library @ 7:pm every meeting.



VANCOUVER ISLAND ZONE REPORT OF MEETING

NOVEMBER 30th, 2013

Patrick Lydon

This Special Report is being prepared prior to the presidential visit and BCLS Spring Meeting to be held in Port Alberni on Saturday the 8th of March at 1.00 PM at Cherry Creek Hall. The meeting will coincide with the Alberni Rock and Gem Show, and this is the first time that the BCLS has held such a meeting on Vancouver Island. It is a great token of respect to the Island Clubs and a special token of regard to our friends and colleagues at the Alberni Rock and Gem Club. This is a great opportunity to express our commitment and involvement with our parent organization on the Mainland and we must not allow this chance to slip through our fingers. I will outline our plans at the end of this report.

The Vancouver Island Zone Committee represents the SIX clubs on Vancouver Island. They are, starting in the North of the Island-

Ripple Rock Gem and Mineral Club.

(Campbell River)

Courtenay Gem and Mineral Club.

Parksville & District Rock and Gem

Club, Alberni Valley Rock and

Gem Club, Cowichan, Cowichan Valley

Rockhound Club and the Victoria

Lapidary & Mineral Society.

These six Clubs operate independently but are also involved in the Island Zone protocol. One Club serves as the presidential Club for a two-year stint and Victoria will transfer the mantel in November of this year to the Campbell River Club.

The Zone has three major Meetings per year and this has been the source of conflict and debate. After the very successful Gemboree Meeting organized by the Courtenay Club in July, some Members of the Zone resigned, as their efforts to reduce the number of the meetings were unsuccessful. I understand the frustration of these members and I had agreed with their proposals. However, the proposals had little or no support and therefore, the Zone protocol will continue. The will of the majority must be allowed in all democratic societies.

Opponents should rally support for their cause and try again to influence the opinion of the delegates. The resignation of two members from Parksville Club was a sad day for the Zone but I am now pleased to report that three stalwart members from that club have now been nominated and

they are Mabel Baaske, Shirley Mulder, and Marion Barclay. As a Zone Confederation, I appeal to all delegates, including myself, to ensure that all members are treated in a respectful and courteous manner. Disrespect breeds disrespect and resentment.

Disagreements must be resolved in a democratic manner. After all, Rockhounding and gem collecting is supposed to be a fun activity. To my knowledge all the Clubs on our Island are doing well. The friendship and cordiality that we all enjoyed at Marion Barclays house in Parksville in November, is typical of the good will that exists among the Clubs.

We now prepare for the busy Spring and Summer Seasons. The 2014 Gemboree will be cancelled as the Cowichan Club will not have facilities this year. Alberni will allow Cowichan Club to avail of its 2016 time slot for the missed Gemboree. I will not include dates of Rock and Gem Shows as these are printed in the Rockhounder and in the VLMS Laphound News.

Our Laphound News editor, Leni Gagnon, has made great efforts to include Island information in the publication. Please send dates and information to this Email address before the 15th of the month. The News is distributed by post and by Email. (editorvlmsnews@shaw.ca)
Port Alberni Club will hold the Summer Camp in August and we will get more details of this major event at the Alberni Spring Meeting. With the help of Cameron Speedie, we hope to have our Website (VIZone@vlms.ca)

up to date before the Spring Meeting.

Now I come to the important part of this report. Our President is coming! For the first time in the history of the BCLS, a Spring Meeting will be held on Vancouver Island. I have spent some time in Scotland and I do know that the Murray Clan is the only clan under British Law, that is allowed to have their own private Army. I doubt that Doug Murray will arrive in his armored Bren Gun Carrier, but nonetheless, we must give our President a warm and enthusiastic reception when he presents himself at the Alberni Rock and Gem Show Meeting. Let it not be said on the banks of the Fraser River in British Columbia, that our President was greeted with a tepid response when he lands on our Island.

I appeal to all delegates and members to show what we are made of and give a rousing welcome to our Chief in Port Alberni. If you can't attend, then designate somebody to stand in your place. Time is short so make arrangements to travel together. Our banner will say - "In March, we march to Port Alberni".



THOUGHT OF THE DAY

Don't believe everything you see and hear. Keep an open mind.

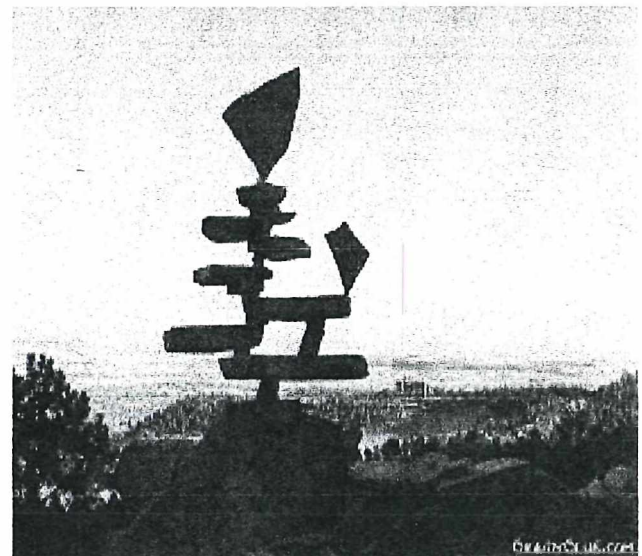
Success comes in cans; failure in can'ts.

HELP!!!

**VOLUNTEERS ARE STILL NEEDED
FOR THE GEM SHOW!!!! CONTACT
GERRI IRWIN IF YOU HAVE SOME
TIME. HER NUMBER IS
250-385-0597 OR
EMAIL gyirwin@telus.net.**

NATURE'S BALANCE

*Light as a feather
Is the balancer of nature
It can be broken.*



SHOWS AND EVENTS**MARCH**

- 1 - 2 **MAPLE RIDGE
LAPIDARY CLUB**
12460 Harris Rd.
Pitt Meadows, BC
- 8 - 9 **ALBERNI VALLEY
ROCK & GEM CLUB**
3720 Moore Rd.
Port Alberni, BC
- 14 - 16 **VICTORIA LAPIDARY
& MINERAL SOCIETY**
95 Bay St.
Victoria, BC
- 29 -30 **MT BAKER ROCK
& GEM CLUB**
2214 Electric Ave.
Bellevue, Wash.
- APRIL**
- 11 - 13 **BC GEM SHOW**
32470 Haida Dr.
Abbotsford, BC
- 26 27 **WEST SEATTLE
ROCK CLUB**
4736 40th Ave. SW
Seattle, Wash.

FUTURE FIELDTRIP

Is anyone interested in going to the Abbotsford Gem Show in April? We could form a convoy and/or share rides. If you are interested please let Mike Hill know. His number is 250-384-3171.

**HAPPY SAINT PATRICK'S
DAY!**

SHOP HINTS**Brad Smith**

When setting stones in a prong mount avoid slipping by grinding a groove in the face of your prong pusher or one jaw of your flat-nose pliers. Easiest way to cut the slot on the pusher is with a file and the easiest way to cut the slot on your pliers is with a cutoff wheel in the Foredom.

Sometimes the road less traveled is less traveled for a reason.

LINKS FROM DAVE MULLETT

For those members who enjoyed Dave's program in February and would like to know more, these are the links.

Directions: type into Google search without the www, this will give you the option to have the page translated for you.

vonarx-bergkristalle.ch
kristallkeller.ch
kristalle.ch

alpine-kristalle.ch

DID YOU KNOW?

Gallium is a toxic chemical element that we use every day if we have a cell phone or have glow in the dark watches. We do not know at this time how it may affect us; I guess we'll find out some time in the future like we did with asbestos.

Trinitite is the glassy residue left on the desert floor after the Trinity nuclear bomb test in New Mexico on July 16, 1945. It is also known as atomsite or Alamogordo glass.

The glass is mainly composed of arkosic sand with quartz grains and feldspar. It also has some plagioclase, calcite, hornblende and augite in a matrix of sandy clay. It is usually a light green in colour but it may vary some. It is mildly radioactive but it is safe to handle.



Trinitite

In the 1940s and into to 1950s it was collected by rockhounds. It is now illegal to take any remaining material when it is found. There still is trinitite in people's collections (my own included)

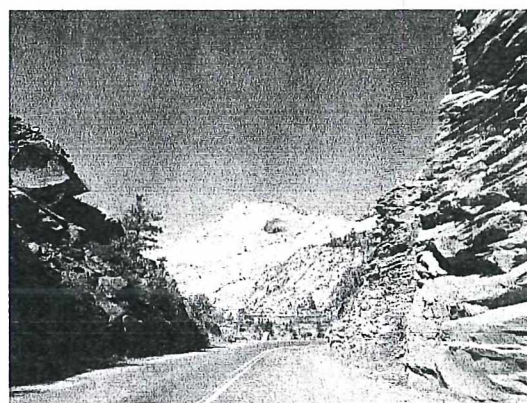
SOURCE: *Wikipedia*
PICTURE: *Internet*

ZION NATIONAL PARK

On our last leg through the National Parks in Utah, we thought: what more can we see that we haven't seen before? Are we going to see more arches? Are we going to see more

colourful hoodoos? Can anything top what we had seen so far? The answer to that is: maybe.

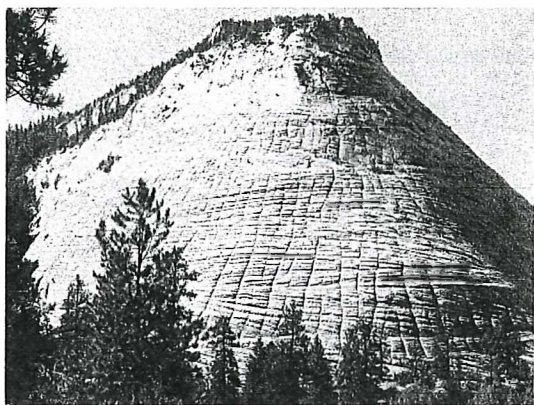
Zion National Park is different from Arches and Bryce Canyon. We travelled through the park east to west as we were travelling in that direction. The park is, well, amazing! There are similarities to Arches National Park because there are arches in Zion. There are cliffs of red sandstone just as there are some in Bryce Canyon.



There is an arch in the making on the side of the white mountain.

But there are great differences as well. There are some very unusual formations throughout the park ranging from checkerboard patterns etched on the side of hills and thin layers of sediments eroded by water flow.

Here's a strange bit of information: the lowest point at Bryce Canyon is the top elevation at Zion and the lowest point at Zion is the top spot at the Grand Canyon. The top elevation at Zion is more that 8,700 feet above sea level and the bottom sits at about 3,600 feet.



As you drive through the park you're just flooded with different sights and not just geological ones. There is also a vast variety of vegetation from pine trees to juniper trees and even cactuses not seen in the other two parks we visited. The park is also home to a variety of animals from small rodents to mule deer and mountain lions. There are exotic birds from wild turkeys to condors to complete the picture, though we didn't see any of those. Off the beaten path and if you can hike a little ways, there are some waterfalls, pools and streams, one of which can only be accessed by repelling.



The tree growing out of the rock is also a cause for the formation to crumble.

We entered the park and were greeted

shortly after by the checkerboard pattern etched in the mountainside. There was tunnel that we had to go through but with cut outs in the side walls to allow for some beautiful sights to be seen. We travelled along, stopping here and there at various points of interest, but what caught us were the large number of switchbacks from the top section of the park to the bottom. We must have dropped a few thousand feet as the features at the bottom of the gorge were tiny from a point of view at the top.

Then, just after that series of switchbacks, the visitors centre at the other end of the park. It didn't seem to take very long to go through the park, maybe a few hours at best.



Then we were off toward Salt Lake City, where along the way we saw more cliffs, mountains and vegetation. Again, if you're in the area, we recommend you take the time and scope out these sights!

SOURCE: Wikipedia and various Brochures from the park

PICTURES: Yvan an Leni

A friend is like a precious gem.... Hard to find..... And difficult to part with. A friend is to treasure forever.

FOR SALE

One floor mounted display cabinet with overall dimensions 42" long x 18" wide x 30" high. This unit stands on two bearers, one at each end.

One display cabinet with overall dimensions 32" long x 11 $\frac{1}{2}$ " wide x 17" high. This unit normally sits on a table or other cabinet.

One display cabinet with overall dimensions 35 $\frac{1}{2}$ " long x 13" wide x 24" high. This unit also normally sits on a table or other cabinet.

Call 778-351-4881 for more information or to make arrangements to view.

WANTED TO BUY

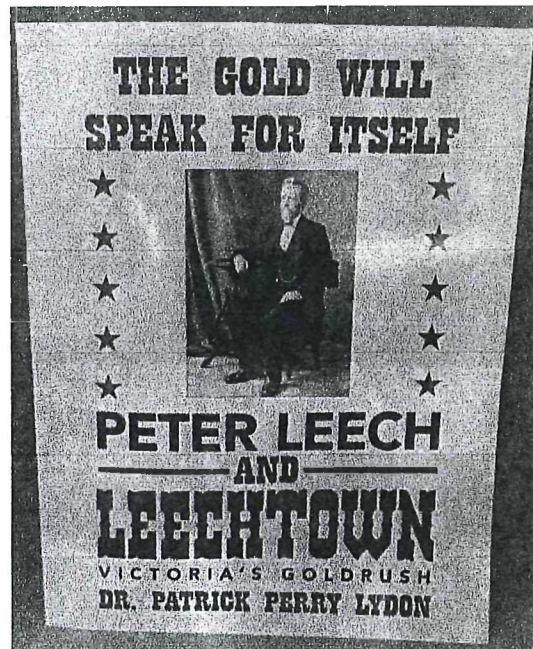
A used **Table Top Rolling Mill**. My phone number is 250-652-0397. Ask for Neil.

FOR SALE

John Konkin has minerals, agates and jaspers for sale. His phone number is 250-391-1820.



BOOK REVIEW:



Book Name:

THE GOLD WILL SPEAK FOR ITSELF

Author:

DR. PATRICK PERRY LYDON

This informative book is about Peter Leech and the history of Leechtown – Victoria's Goldrush. The early days of Victoria and Leechtown and some of its citizens are documented in this book. The facts and pictures of the area's history make for interesting read and time well spent.

You may buy the book at the Rockhound Shop or see Patrick.

NOTE: Patrick has received an interesting letter regarding this book. You may read it on last page of this newsletter.

WORD SEARCH

VLMS ROCK & GEM SHOW 2014

I S C R O Z O Y V D O O R P R I Z E S
 E P M Y O J U I S E S A C W O H S B H
 L L A H E C N I V A D O D R A N O E L
 V Q T N E M E T I C X E D F K F E B D
 F F R S J I F S R E E T N U L O V Y J
 Q F W L J D E A L E R S X J I D T Z Y
 R Y L A S P I N A N D W I N E I W G R
 E N V R H Y X C Z E X V O M R O E R P
 N S D E S W K G T B Z R O U H M O M L
 R D Z N B A B U D O B N C H S C R A W
 O A K I A I L S O O S E L W K M N M W
 C E S M X N Y J I T S W Z S N O E H V
 S B H F O O D V R D F Y Z O I G S C C
 D V G N I N N A P D L O G T P L I Y D
 I T R R G P T D A C D K A J I L V W R
 K G N H M O N N K P I C I S B Y Z P T
 J Q N O R X X U U S U R S U K F U M H
 C Q H S O W G F R D B O P L V G D L P
 P D W W C M F R E B F A Q G Q D K B S

~~BEADS~~ ~~DEALERS~~ ~~DEMONSTRATORS~~ ~~DOOR PRIZES~~ ~~EDUCATIONAL~~
~~FOOD~~ ~~FOSSILS~~ ~~FUN~~ ~~GEMS~~ ~~GOLD PANNING~~ ~~KIDS CORNER~~
~~LEONARDO DA VINCI HALL~~ ~~MINERALS~~ ~~PUBLIC~~ ~~ROCKS~~ ~~SECURITY~~
~~SHOWCASES~~ ~~SPIN AND WIN~~ ~~VOLUNTEERS~~



BUCKINGHAM PALACE

18th December, 2013

Dear Dr Lydon,

The Queen wishes me to thank you for your letter enclosing a copy of your book, *The gold will speak for itself*. Her Majesty appreciated your thoughtfulness in sending this publication for her to see.

The Queen was also very touched by your kind words for her beloved mother, and about Her Majesty's historic State Visit to Ireland. I am sure you would like to know that The Queen was delighted to go to the Republic and was deeply moved by the warm welcome she received.

Letters such as yours give Her Majesty much pleasure and I am to thank you, once again, for writing as you did.

Yours sincerely,
Richarda Elton

Lady-in-Waiting

Dr P Lydon

VLMS General Meeting, Monday, February 3rd, 2014

Call to order at 7:34 pm and welcome by Mike Hill, President
guests welcomed to the meeting ; John Mueller from Lethbridge AB and Kay Ham
Minutes: November minutes published in January's LHN
Motion to accept minutes by Sylvan; seconded Carrie. All in favour; Carried.

Treasurer Report: as of January 31st, 2014 read to the membership by Greg balance of \$16,462.84
Discussion: none
Motion to accept report as read made from Greg; Seconded by Mike F.. All in favour; Motion carried.

Correspondence: show pamphlets for Maple Ridge Lapidary club March 1st weekend (club show that precedes ours).

Greg added the Parskville has an upcoming week long sale

Sunshine Corner: John Burns is on the mend and thanks to Mike Hill for all of his assistance.
Letter to be sent to family of member that passed away; Leni to provide Lorena with name and details

Workshop: slab saw needs to be replaced an island 14" slab saw (\$1895 US plus shipping, exchange and applicable taxes).

David H. Leni made a motion for the club to go ahead and purchase; seconded by Mike. All in favour
Discussion: Gerri asked if the proposed saw is oil or water based; Mike confirmed either can be used but oil is best and saw is sealed.

Gordon asked why the club cannot get an 18" saw; Mike advised that there is not sufficient space in the workshop to operate a larger machine.

Patrick motioned that move on the motion; seconded by Mike F

Mike H. Moved for a motion to accept the motion as to purchase as presented; seconded by Patrick; All in favour; Carried.

Membership: Murdo advised that all memberships must be in by end of February before he reports to the BCLS.

Carrie commented that the online form is incorrect for the price for the mailout of the Rockhound Newsletter

Library: Sylvan advised that there is nothing new, however, Patrick's book is available again to be checked out.

Field Trip: Sunday, February 23rd; If you want to go, please call Gilles beforehand if you have any questions. 250 382-6199

Programs: Leni advised tonight's program is Rockhounding in Switzerland by Dave Mullet
So far nothing has been confirmed for next month.

Laphound News: Leni reminded all in attendance that Feb 15th is the deadline for any submissions..

Island Zone: none

Rock & Gem Show:

February 18th next meeting at the clubhouse

Gerri announced that this year there will be a Kids corner and it will include metal detections

Presidents Report: none

New Business: none

Unfinished Business: none

Announcements: none

Display Table:

Gilles and Sean has for display various crystals including chlorite and jadite
Sale items available from Brian, guest John Meuller, and Gordon Taylor

Member's Event:

Coffee break at 8:05 with member's event; four draws available.

Program:

Dave Mullet presents Giant Crystals from Switzerland

Adjournment: Motion to adjourn by Leni; seconded Patrick. Carried

Adjourned: 9:00PM