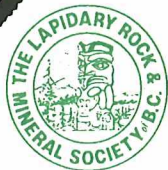




LAPHOUND NEWS



VICTORIA LAPIDARY & MINERAL SOCIETY

P.O. Box 5114, Station B

Victoria, B.C. V8R 6N3



Volume 57-7

Website - www.vlms.ca

October 2014

BOARD

President	Mike Hill
Vice President	David Hosking
Past President	Patrick Lydon
Secretary	vacant
Treasurer	Greg Shea
Members	Brian McMillan
At	Yvan Gagnon
Large	vacant
	Leni Gagnon

NEXT MEETING:

When: Monday, October 6, 2014

Place: Burnside Lawnbowling
Clubhouse
274 Hampton Rd.

Time: 7:00 p.m.

PROGRAM: "The minerals of
Madagascar" by Ron Zeilstra

EXECUTIVE MEETING:

When: Last Monday of every month
(**no** meeting July, August & December)

Place: Club Workshop, 286 Hampton

Time: 7:00 p.m.

COMMITTEES

Programs	Vacant
Librarian	Sylvan Burnside Christine Patton
Show Chair	Alanna Shillito David Mullett
Membership	Jessica Hedberg Murdo Smith
Field Trips	Gilles Lebrun 250-382-6119
Sunshine Corner	Lorena Taylor 250-384-0775
Refreshments	Molly Beddington Barbara
MacKenzie Workshop	Brian McMillan Vanessa Steffens
Editor	Leni Gagnon 250-479-6214 editorvlmsnews@shaw.ca

2015 ROCK & GEM SHOW MEETING:

When: ~~To Be announced at meeting~~

Place: 274 Hampton Rd. *21 October*

Time: 7:00 pm

Anyone wanting to be on the
committee is welcome

FIELD TRIP:

When: Sunday, October 19, 2014

Where: Island View Beach

Time: 9:00 a.m. meet at the beach

If you are going, phone Gilles

WORKSHOP:

When: Thursday evenings

Where: 286 Hampton Rd.

Time: 7:00 - 9:00 pm

When: Saturdays

Time: 11:00 am - 3:00 pm

NOTE: When classes are being run, the Saturday hours will be from 1:00 – 3:00 pm. Check with Brian or Vanessa.

You must have taken the lapidary course before you can use the machines. If you are interested in taking a course, contact Brian or Vanessa.

EDITOR'S MESSAGE

Leni Gagnon

I can't believe how fast this year is flying by. I don't make New Year resolutions but I had all kinds of plans for getting things done. Some minor things I managed to finish but not the important ones. I *have* started two of the more important ones, like finally getting my database up to date but I keep getting new specimens and falling further behind.

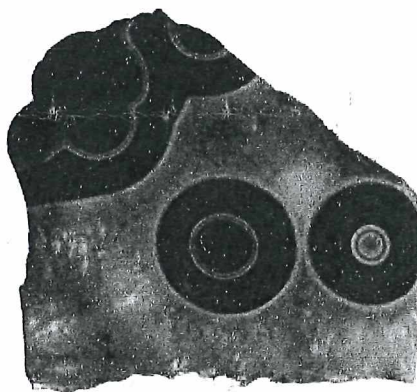
Another plan was to set up a proper template for the Laphound News. I have tried several different ones but I am not happy with any of them. So there is another project unfinished. The trouble with this project is that I don't where to begin or how to go about it properly.

Talking about getting new specimens, Yvan and I went to Port Angeles Show and found some very nice spheres. It seems that in the last few shows I have been getting spheres because I haven't been to any shows that had the cabinet specimens or the rare species that I usually collect. I certainly can't go to a show and not get anything, now can I? That would put a real dent in my day!

We left Victoria a few days early so that we could have time to explore the Olympic National Forest. That is one big beautiful park! When we finally got to Port Angeles, we stopped at the Goodwill Store to look for some books for Yvan. Lo and behold, the first person I saw was Jane Haines. Jane is a long time member of our club who can't attend the meetings. We had a nice chat and caught up on some news. It always is a pleasant surprise to run into somebody you know when you least expect to. We ran into her again at the Show. We also met up with Lucy and Ann Abolins, who also came for the Show. We travelled back on the same ferry. It is always good to show our support for other clubs.

Please remember that we are looking for volunteers to replace the Secretary, Program Coordinator, and Sunshine Coordinator.

Thank you Allana Shillito and David Mullett for volunteering to chair the 2015 Rock & Gem Show.



We are looking for volunteers!

MEMBERSHIP**DUES****Peter Martin**

There was a club member named
Hughes
Who waited too long to pay dues.
She was struck off the roster
Did not realize it cost her
The classes, club field trips and news.

Source: *Calgary Lapidary Journal 12/11*

Please pay as soon as possible before
end of December 2015. If you would
like to mail in your dues, see the
renewal form on the last page.

SHOWS & EVENTS**October**

18-19 **SURREY ROCKHOUND
CLUB**
6306 152 Street
Surrey, BC

25-26 **PORT MOODY ROCK CLUB**
125 Kyle Street
Port Moody, BC

November

8-9 **DELTA ROCKHOUND
GEM AND MINERAL CLUB**
1720 56 St (Tsawassen)
Delta, BC

14-15 **ABBOTSFORD ROCK
AND GEM CLUB**
33336 2nd Avenue
Mission, BC

THOUGHT OF THE DAY

In matters of style, swim with the
current; in matters of principle, stand
like a rock.

We make a living by what we get, but
we make a life by what we give.
Winston Churchill

A moment of patience in a moment of
anger saves you a hundred moments
of regret.

DID YOU KNOW

Mineral Oil has many uses. It is fine for
preserving borax crystals from
hydration changes. It makes varisite a
deeper green and improves the
appearance of fluorites and calcites.

Source: *The Memphis Archaeological Society
via Rockhound Rambling 12/2005*

If you have an item that has been
epoxied incorrectly, it can be taken
apart by soaking it in household
vinegar. It works and is inexpensive.

Source: *Calgary Lapidary Journal, date
Unknown, via Rockhound Rambling
12/2008*

SHOP HINTS

1. Pumice is good for obtaining a soft
finish when doing some silver work. If
you don't have any, use toothpaste.
Pumice is the polishing agent in
toothpaste. If it is a fluoride
toothpaste, it can also be used for
cleaning crystals.

Source: *Rock Chips and Rocky Trails*

2. One way to clean quartz and amethyst crystals that does not involve dangerous acids is to cover them with fresh vinegar to remove the carbonates such as calcite, barite and lime. Allow the crystals to stand overnight in the vinegar, repeating if necessary. Wash well, then place the crystals in washing type ammonia for 8 to 12 hours, remove, rinse and wipe.

3. Sometimes you need to drill a number of holes all to the same depth. One quick and easy way to do this is to wind some tape around the drill bit so that the tape just touches the part surface when the hole is deep enough.

You can do this by drilling one hole correctly, leaving the bit in the hole, and wrapping tape around the bit at the surface level.

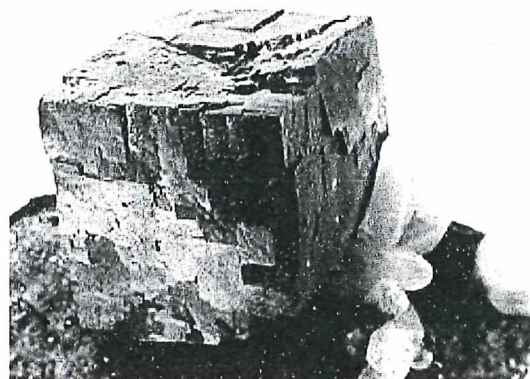
Source: *Bench Tips by Brad Smith*
Via *The Planet Earth Post* – Winter 2012



Sean Maier at Summer Camp in Port Alberni. Looks like he's trying to dig up the mountain. Way to go, Sean.

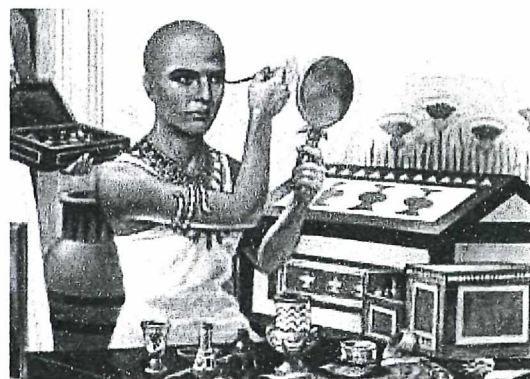
GALENA

The most abundant and most widely distributed of the sulfide minerals is *galena*. It is the most important ore of lead and an important source of silver. It may also contain arsenic, antimony and copper. Associated minerals with galena are calcite, dolomite, pyrite, sphalerite, and fluorite.



Galena cube with calcite

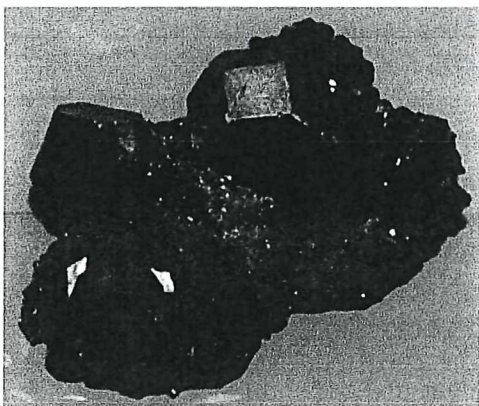
Galena has been long known in history. It has been worked for lead as early as 3000 BC. Galena was named by the Greek, Pliny the Elder in the years 77-79 AD. It means Lead Ore. In ancient Egypt it was used in *Kohl*. It was applied around the eyes to reduce the glare of the desert sun and to repel flies that carried diseases.



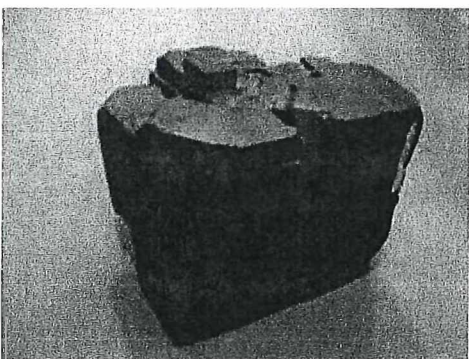
Applying Kohl

The chemical formula for galena is PbS. It is also known as, "Lead Glance" and "Fool's Silver". It has a hardness of $2\frac{1}{2}$ on the Moh's Scale. Galena is a lead gray sometimes with a bluish tint in colour with a metallic luster that is sometimes dull. To a person not familiar with minerals it is often mistaken for silver. Its density is 7.5, heavy even for a metallic mineral.

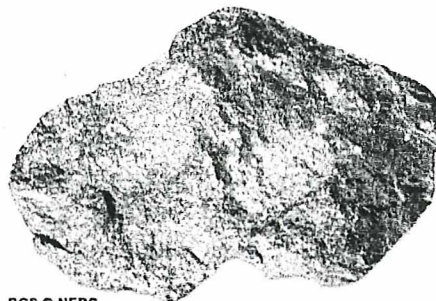
Galena has an isometric crystal system. Although the crystal shape that is most widely recognized is the cube, it can take other crystal forms well; octahedron and dodecahedral being the other crystal forms for galena. It is also found in massive, granular, fibrous and platy forms.



dodecahedral



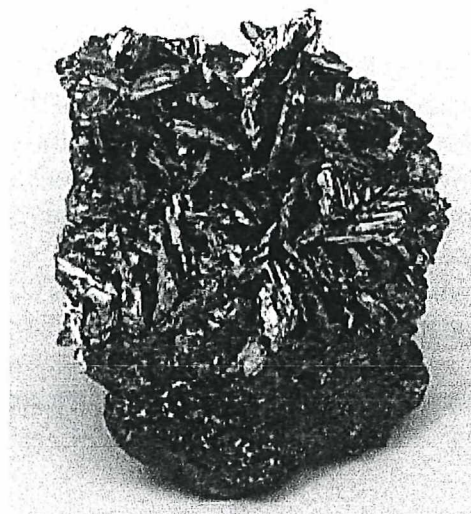
Octahedron



BGS © NERC

Massive

Spinel law twinning can sometimes occur forming flattened crystals.



Spinal law twinned galena

Galena is easily damaged. It is a fragile mineral. Its well-formed crystals may shatter if put under slight pressure or dropped.

It often has a dull luster because of exposure to air. Weathering or oxidation alters Galena to *anglesite* (lead sulfate) or *cerussite* (lead carbonate).

Despite its fragility Galena has its industrial uses. It is a semiconductor of electricity and in early years it was

used in wireless communication systems. Today, it is used in acid-batteries, lead sheets and shot. It is also used in a green glaze applied to pottery. In some areas the galena contains about 1-2 percent silver and in these areas the silver by product far outweighs the main lead ore in revenue.

Galena is found worldwide and in various environments. Noted deposits of galena are found in Germany, England, Bulgaria, Canada (BC), Australia and the USA.

Health Warning - While bound to its crystal structure the lead content of galena is of minor concern and the mineral is safe to handle. However, prolonged exposure to pulverized dust (inhalation or ingestion) is hazardous to your health. Always take precautions.

Source:

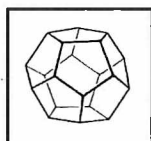
Wikipedia, Mindat,
Webmineral



A cube is one of the most common and simplest of crystal shapes



Cube with modified octahedral shape found in galena.



Dodecahedral shape

A FACETER'S WIFE

Bettie Johnson

Oh sad is the life
For a faceter's wife
As she watches T.V. all alone.
While he hopes and he schemes
For the gem of his dreams,
For the 100 score perfect stone.

He must never be told
That dinner's grown cold,
Or asked to do some household chore.
It might make the lap
Cause some awful mishap,
And scratch up the table - or more!

It might never be said
"Dear, please come to bed".
Although the clock has struck two.
While the culet is done,
And the mains - all but one,
He still has the girdle to do!

Then disaster appears.
Neighbours cover their ears.
Blue smoke comes under the door!
He had just finished the top
When it fell off the dop
And got lost in the junk on the floor!

But after the pain, he'll try it again
At least he'll never get bored!
He'll try a new cut.
She's alone again but
This one may win an award.

"So it's all been worth while",
I can say with a smile
As I look at his case in a show.
Each stone passed his test.
He just did his best.
As a Faceter's wife, I should know!

Bettie is the wife of competition
faceter, Vern Johnson. Vern has won

VLMS General Meeting, Monday, September 8th, 2014

Call to order at 7:17 pm and welcome by Mike Hill, President

Several new members attending tonight's meeting

Minutes: Motion to accept minutes by Dave; seconded Carrie. All in favour; Carried.

Treasurer Report: reports as of May 30th, June 30th, July 31st, and August 31st, 2014 read to the membership by Greg; balances and details available from Greg upon request.

Discussion: none

Motion to accept report as reported by Greg; Moved by Sean; Seconded by Sylvan; All in favour; Motion carried.

David H moved that the membership appoint an audit board, Mike second; moved.

Correspondence: letter from Don Meir

Sunshine Corner: Lorena provided a verbal report to the members in attendance requesting that someone take over to her duties of Sunshine Corner.

News updates to loss of John Hodder and Pam Dyer; letter and contact information regarding lawyer for Pam Dyer available.

Workshop: Brian reported Workshop is very busy; and we are always short on available Genies;

Workshop slab saw is very busy with at least one slab per rock cut going to rock slab inventory for sale at Rock and Gem show.

David Hoskings brought forward new rental agreement from the Les Passmore Senior Centre; seconded by Carrie; all in favour

Motion to accept new agreement for \$3600 for the year for workshop rental for year 2014/2015; seconded by Allana; Carried.

David did mention that the club should expect annual increases from the centre until they are caught up to comparable rental space leases.

Membership: several new members joining with half year membership starting tonight; Annual membership fees will be accepted after October's meeting.

Library: Sylvan provided a report of new materials available including more pins and crests.

Field Trip: Gilles reported that over the summer two trips were done to Lost Creek; Doyle managed to find some gold (more gold in one day than Gilles been able to find in all the years he's been going there) Next field trip on Septembers 21st meeting at the Senior Centre at 9:00 at Juan de Fuca ...trip going to Mt. Tzouhalem Maple Bay

Please call Gilles beforehand if you have any questions. 250 382-6199

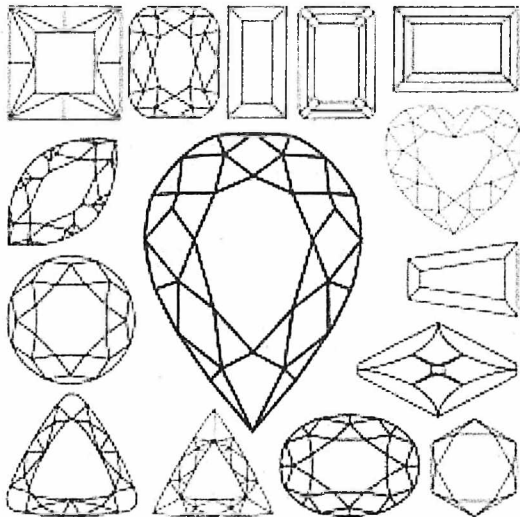
Programs: Sean and Carrie – summer camp at Port Alberni

Next month – Ron Zeillstra

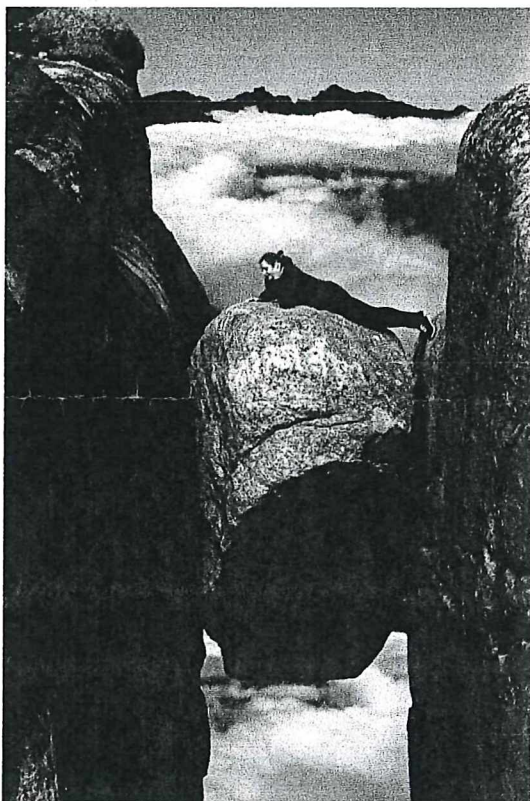
Laphound News: Leni is stepping down as editor and greatly invites anyone interested to contact her as soon as possible

Rock & Gem Show: David reported regarding showcases needed and that we still have need for a show chair; Vanessa motioned that Allana Shilliti take over as show chair for the 2015 Rock and Gem Show; David Mullett to co-chair. All in favour.

more competitions than anyone and has been the National Champion.



Types of gem cuts.



Finally, I can have some peace and quiet.

FILL IN THE BLANKS

How well do you know your minerals? Some extra answers have been added to make it a little more interesting.

1. _____ is the mineral which makes up the teeth and bones in all vertebrate animals.
2. The _____ process of magma determines the _____ of crystals that form in a mineral.
3. The mineral _____ covers about 60% of the earth's crust and is used in the making of _____.
4. All minerals are _____ because they are made of _____ things.
5. The most prized of all minerals are _____.
6. The single most toxic mineral to handle is _____.
7. _____ has an index refraction so close to water that when placed in water it becomes _____.
8. _____ are made up of at least _____ minerals.

realgar, pressure, 2, gemstones, size, elements, living, inorganic cinnabar, heating, quartz, cryolite, rocks, 4, galena, feldspar, apatite, calcite, cooling, ceramics, invisible, shine, organic, nonliving, jewelry.

FOR SALE

Downsizing! If you have a special interest in Petrified Wood, Fossils, assorted rocks and minerals, some, some equipment, I can help you. Call Barb for an appointment, 778-351-4881.

FOR SALE

Rocks, minerals and equipment. Phone John Konkin at 250-391-1820.

FREE

Giving away my large showcase 46 " wide x 34 " high.. It has legs that will make it stand 64 " from the ground.

I also have other rocks & equipment for sale.

250-477-0643 Gerry Bentley

THANKSGIVING

The first Canadian Thanksgiving is thought to have occurred in 1578 when explorer Martin Frobisher held a Thanksgiving Celebration for having survived his journey from England.

**HALLOWEEN**

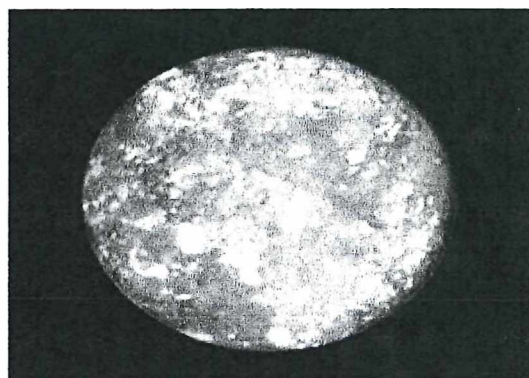
It is believed that Halloween has been around for 6000 years in one form or another.

A person with a fear of Halloween suffers from *samhainophobia*.

The first time Trick-or-Treating was mentioned in North America in print was in 1927 in Alberta Canada. The town's name was Blackie.

**Answers to Quiz**

1. apatite 2. cooling, size 3. feldspar, ceramics
4. inorganic, nonliving 5. gemstones
6. cinnabar 7. cryotile, invisible 8. rocks, 2



Opal-the October birthstone

Victoria Lapidary & Mineral Society 2015 Membership Renewal

Submit this with your fees before February 15, 2015 at club meetings OR mail to:
 Victoria Lapidary & Mineral Society, P.O. Box 5114, Station B, Victoria, BC, V8R 6N3

Date:- _____

Name(s) _____

Home Address _____

City _____ Prov. _____ Postal Code _____

Phone # (Home) _____ (Alternate) _____

E-mail Address (print clearly) _____

Membership Fee (Please check box)	Single Adult over 18 years	\$25			
	Two Adults at same address	\$35			
	One parent family (1 adult + kids)	\$35			
	Two parent family (2 adults with children under 18)	\$40			
	Student (over 18)	\$20			
Laphound News only-- Electronic via e-mail		Free			
BCLS Rockhounder mailed **		\$26			Receipt
BCLS Directory - pick-up at meetings		\$ 4			Cash
Nametag Replacement		\$14			Chq
		Total		\$	Total \$

** BCLS Rockhounder mailed – Price and availability to be confirmed.

