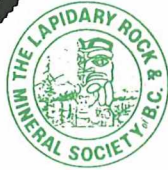




LAPHOUND NEWS



VICTORIA LAPIDARY & MINERAL SOCIETY

P.O. Box 5114, Station B
Victoria, B.C. V8R 6N3



Volume 57-9

Website: www.vlms.ca

December 2014

BOARD

President	Mike Hill
Vice President	David Hosking
Past President	Patrick Lydon
Secretary	Vanessa Steffens
Treasurer	Greg Shea
Members	Brian McMillan
At	Yvan Gagnon
Large	Rose Marie Spicher Leni Gagnon

COMMITTEES

Programs	Vacant
Librarian	Sylvan Burnside Christine Patton
Show Chair	Gerri Irwin Yvan Gagnon
Membership	Margaret Braithewaite Murdo Smith
Field Trips	Gilles Lebrun 250-382-6119
Sunshine Corner	Lorena Taylor 250-384-0775
Refreshments	Molly Beddington Barbara MacKenzie
Workshop	Brian McMillan Karen Rowe
Editor	Leni Gagnon 250-479-6214 editorvlmsnews@shaw.ca

NEXT MEETING:

When: Monday, December 1, 2014

Place: Burnside Lawnbowling
Clubhouse
274 Hampton Rd.

Time: 7:00 p.m.

PROGRAM: Christmas Potluck
Dinner. For details see page 2

EXECUTIVE MEETING:

When: Last Monday of every month
(no meeting July, August & December)

Place: Club Workshop, 286 Hampton

Time: 7:00 p.m.

FIELD TRIP:

When: Sunday, 2014

Where:

Time: 9:00 a.m. meet at Juan De Fuca
Seniors building.

If you are going, phone Gilles

WORKSHOP:

When: Thursday evenings

Where: 286 Hampton Rd.

Time: 7:00 – 9:00 pm

When: Saturdays

Time: 11:00 am – 3:00 pm

NOTE: When classes are being run,
the Saturday hours will be from 1:00 –
3:00 pm. Check with Brian or Karen

You must have taken the lapidary course before you can use the machines. If you are interested in taking a course, contact Brian or Karen at vlmsworkshop@gmail.com

CHRISTMAS POTLUCK DINNER
DECEMBER 1, 2014



PLACE: Burnside Lawnbowling Club

TIME: doors open at 6:30 pm;
Dinner at 7:00 pm

The club will provide turkey, ham, buns and some condiments. Coffee will also be provided but wine and beer must be purchased.

You are asked to bring your own dishes and cutlery. Please bring a potluck food item to share with members or a desert.

If you wish to participate in the gift exchange then bring a wrapped present worth \$10 - \$15. Ladies should bring a gift for a lady and the gentlemen should bring a wrapped gift for a man. Please mark whether your gift is meant for a man or woman.

We will also be collecting nonperishable food items for the food bank.

It should be a fun evening of socializing with old friends and making new ones.

EDITOR'S REMARKS

Leni Gagnon



This has been a difficult month for me. I have been ill since before the last issue was printed. I haven't touched a computer since then and I still don't feel well. I hope to feel better before we go to Montreal on December 2nd. In the meantime, I've had lots of time to think about the Laphound News. I have finally made up my mind. We had to put our dog down and my grandson has moved to Saskatoon. So this is the first time in 45 years that we are "Empty Nesters". Now we can come and go as we please. Therefore it is with regret that I am resigning as editor of the Laphound News. My last issue will be the one for January 2015. Someone has expressed an interest in taking over.

Overheard: one rockhouser to his wife, "When I said that I wanted a rock for Christmas, I did not mean a lump of coal".

MEMBERSHIP REPORT
M Smith/M Braithewaite

At the November meeting we had some more membership renewals for the year 2015 and we welcomed two new members, Wendy Sylvester and Earl Colwill. Before the end of December we will need to submit our membership report to British Columbia Lapidary Society for the year 2015, otherwise the club will be considered to be delinquent in reporting and members who have not renewed for the year will not be insured for going on field trips.

At the Annual General Meeting in January Margaret Braithwaite will need the appointment of an Assistant Membership Coordinator to help her at the membership desk. Murdo Smith is retiring from the position; he has fulfilled his sentence.

Membership renewal forms on the last page of this issue. Please make sure that you renew ASAP. Thank you to all the members who have already renewed their membership.

LIBRARY REPORT
S Burnside/C Paton

Some of the outstanding books have come back to the library but there are many more outstanding. Thank you for returning the books that have come back. Many of the new members would like the opportunity of seeing what our library has to offer.

SUNSHINE CORNER
Lorena Taylor

We have several who have had hospital stays lately, John Burns, Gordon Taylor and Molly Beddington. There are others who have been feeling under the weather with the flu or a cold. To all of you we wish you a speedy recovery.



THOUGHT OF THE DAY

Life is an opportunity, benefit from it.

Life is a beauty, admire it.

Life is a dream, realize it.

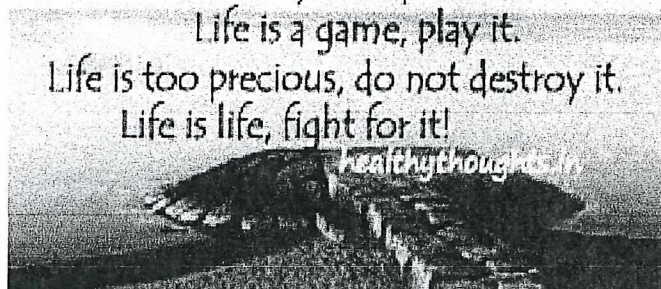
Life is a challenge, meet it.

Life is a duty, complete it.

Life is a game, play it.

Life is too precious, do not destroy it.

Life is life, fight for it!



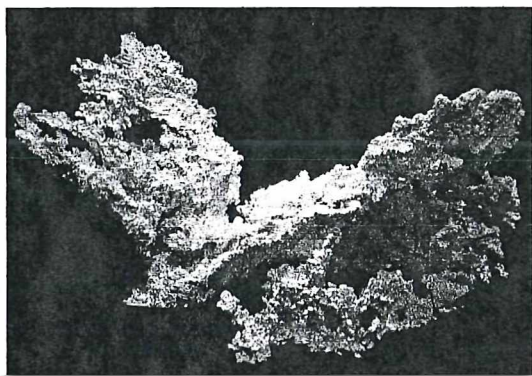
DID YOU KNOW

Due to the earth's gravity it is impossible for mountains to get higher more than 1500 metres (about 4900 ft). After that the weight of the mountain would cause it crumble.

Gold is the only metal that doesn't rust, even if it is buried in the ground for thousands of years.

It takes glass 1 million years to decompose, which means it never wears out and can be recycled an infinite number of times.

Source: Several sites on the internet



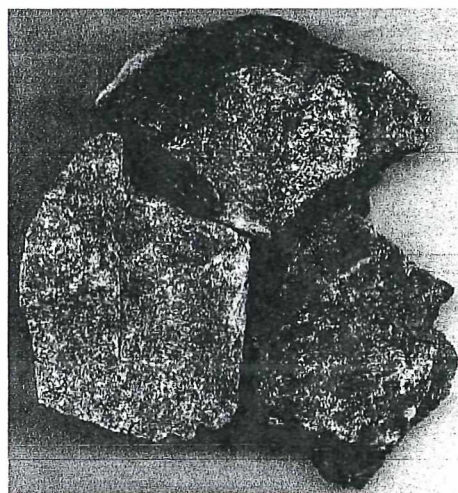
THE FRICOT GOLD NUGGET AT THE CALIFORNIA MINING AND MINERALS MUSEUM



TELLING LAPIS LAZULI FROM SODALITE

If you want to know whether you have **sodalite, lapis** or imitation lapis look for pyrite inclusions.

Lapis-Lazuli will have pyrite inclusions. Sodalite does not have pyrite inclusions. In imitation lapis the inclusions are golden flakes not pyrite crystals.

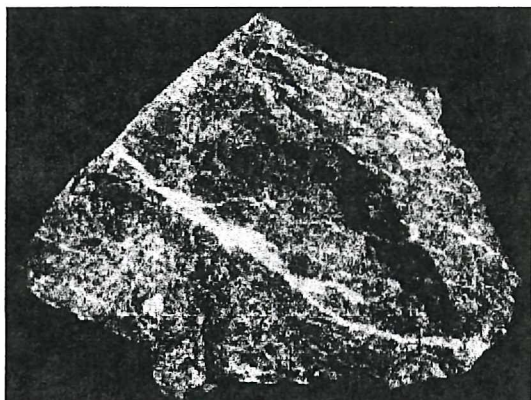


Lapis-Lazuli

Lazurite is the mineral name of the gem and ornamental stone lapis-lazuli. lapis lazuli is a gemstone with a rich blue color. It has a hardness of 5-5 1/2, is composed of sodium aluminum silicate with some sulphur. Most of the properties of lazurite are similar to those of sodalite, but the association of pyrite with lazurite determines the identification.

Sodalite is composed of sodium aluminum silicate with chlorides. It is 5-1/2 to 6 on the hardness scale and the color is usually blue but may tend toward white, grey, yellow or red. It is associated with other feldspathoids, so called because they resemble

feldspars but are of a slightly different composition.



Sodalite

When working lapis to a polish it requires fine sanding to prevent pyrite inclusions from protruding. Leather may be used with chrome oxide for polishing.

sodalite, on the other hand polishes perfectly on felt with cerium oxide, after a fine job of sanding.

A drop of hydrochloric acid is good for testing lapis-lazuli. A drop of it on the blue stone creates an odor of hydrogen sulfide. On the white areas of the stone it usually effervesces because the white is usually calcite. This test will distinguish lapis from sodalite.

Source:

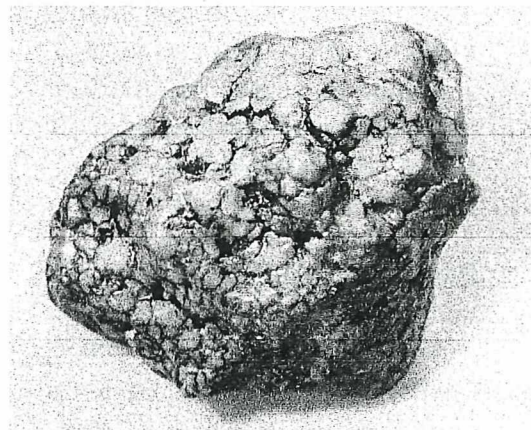
Unknown



copyright@creelings.com

Rock'n Santa

TURQUOISE



NATURAL TURQUOISE is any turquoise that has not been altered in any form. The test for this is a touch of ammonia at the back of the piece to be tested. Natural turquoise will turn white.

ENHANCED TURQUOISE is a hard turquoise with a poor color. It is electrochemically treated by being placed in a bath much like a plating solution and then treated. The test for this material is a touch of oxalic acid that will turn the turquoise white.

STABILIZED TURQUOISE makes up ninety percent of the turquoise mined today. It is chalk turquoise that has been stabilized by drying and then placing it in a vacuum chamber and flooding the chamber with an epoxy material, generally clinoepoxide, then pouring the excess and flooding it with setting mordant and pressurizing the chamber to force the mordant into the turquoise to set up the

clinoepoxide so the turquoise will not absorb oils or break easily.

RECONSTRUCTED TURQUOISE

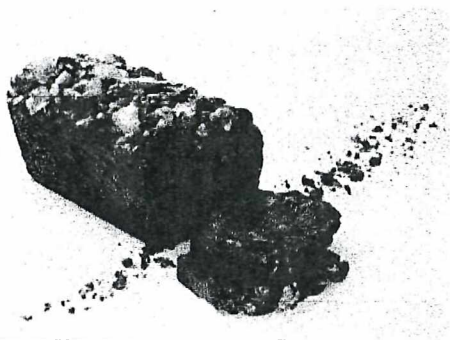
is a chalk turquoise that has been crushed, has resins and dyes added, and the mixture is compressed into a solid rock.

BAKED TURQUOISE is turquoise that has been set on Devcon or some other substance to make it thicker and stabilize it to keep it from breaking. Usually used on stabilized turquoise and on small pieces of natural turquoise to provide a flat back so it may be easily cut.

Another process for changing the color of turquoise is: The **NAVAJO METHOD**: Boil turquoise in mutton fat causing the turquoise to run green. The Navajo consider the blue turquoise as male and the green turquoise as female

Source: :By Leon Gilmore from Garnet Gazette. 8/1997, via The Huachuca Gem Club Newsletter, 2/2010

USES FOR FRUITCAKE



- ◆ Paint a few white and place them outside on the grass so

people won't park on your lawn.

- ◆ Use it as building material like the ancient Egyptians used to build the Great Pyramids.
- ◆ Keep one under your pillow for home defense.
- ◆ Send one to the junk mail company with a note asking them to take you off their list.
- ◆ It's colourful, use it as a Yule Log.
- ◆ Give one to your boss and tell him it's a life preserver.
- ◆ Use it as a base for flower arrangements.
- ◆ Donate to the local airport for use as airliner wheel blocks.
- ◆ Grind a few up and give it to your in-laws in a bag marked "lawn fertilizer".
- ◆ For a community project, sink a few in the ocean and build an artificial reef.
- ◆ Tie one to each foot when you walk through the deep snow to keep your feet dry.

SOURCE:

Unknown

